

Product datasheet for **CS533020**

Frozen Tissue Sections, Lung

Product data:

Product Type:	Frozen Sections
Disease State:	Other Disease
Diagnosis Category:	Chronic Obstructive Pulmonary Disease (COPD)
Tissue:	Lung
Frozen Sample ID:	FR0002FAB3
Case ID:	CI0000013208
Tissue of Origin:	Lung
Site of Finding:	Lung
Appearance:	L
Sample Diagnosis (from Pathology Verification):	Bronchiolectasis
Normal:	0%
Lesional:	100%
Tumor:	0%
Tumor Hypo/Acellular Stroma:	0%
Tumor Hypercellular Stroma:	0%
Necrosis:	0%
Pathology Verification notes from H&E review:	Non Tumor Structures: 5% Alveoli, 35% Bronchioles, 60% Fibrovascular septa



CASE Diagnosis (from medical center path report): Carcinoma of lung, squamous cell

Age: 67

Gender: Female

Race: White or Caucasian

Tumor Grade: AJCC G2: Moderately differentiated

Minimum Stage Grouping: IB

T (Extent of Primary Tumor): T2

N (Lymph node metastasis): N0

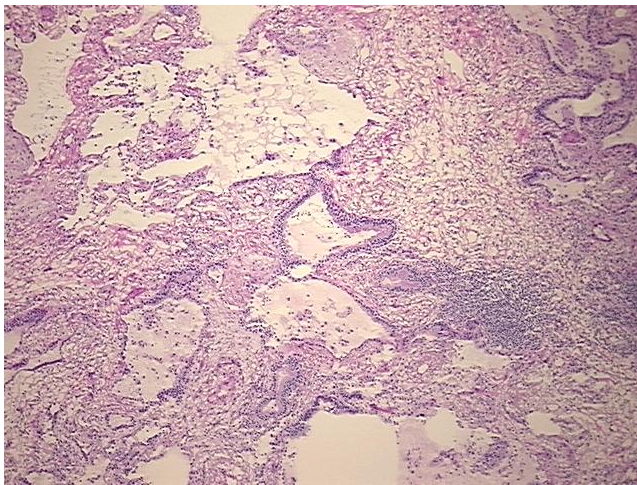
M (Distant metastasis): MX

Diagnostic Test Results: Verhoeff–Van Gieson ~ Elastin stain, Reported as Performed or Reviewed

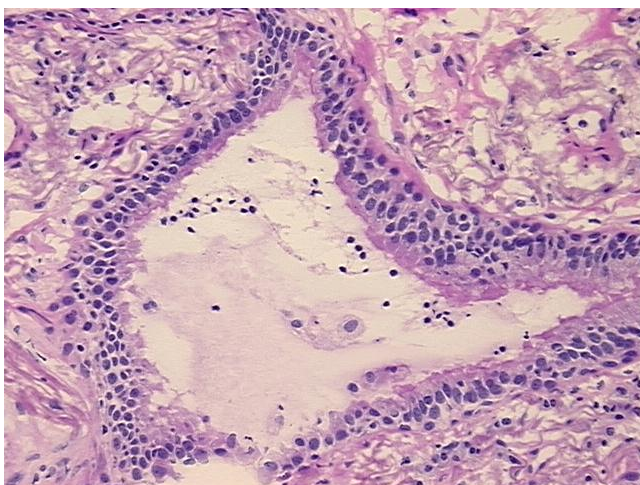
Storage: Store frozen tissue sections at –80°C.

Stability: All frozen tissue sections are stable for 1 year from date of purchase if stored at –80°C without repeated freeze/thaws.

Product images:



4x Image



20x Image