

Product datasheet for **CS533016**

Frozen Tissue Sections, Lung

Product data:

Product Type:	Frozen Sections
Disease State:	Cancer
Diagnosis Category:	Lung Cancer
Tissue:	Lung
Frozen Sample ID:	FR0002FAF1
Case ID:	CI0000013206
Tissue of Origin:	Lung
Site of Finding:	Lung
Appearance:	T
Sample Diagnosis (from Pathology Verification):	Carcinoma of lung, squamous cell
Normal:	85%
Lesional:	0%
Tumor:	5%
Tumor Hypo/Acellular Stroma:	0%
Tumor Hypercellular Stroma:	10%
Necrosis:	0%
Pathology Verification notes from H&E review:	Non Tumor Structures: 80% Alveoli, 5% Bronchioles, 15% Fibrovascular septa



CASE Diagnosis (from medical center path report): Carcinoma of lung, squamous cell

Age: 75

Gender: Female

Race: White or Caucasian

Tumor Grade: AJCC G2: Moderately differentiated

Minimum Stage Grouping: IA

T (Extent of Primary Tumor): T1

N (Lymph node metastasis): N0

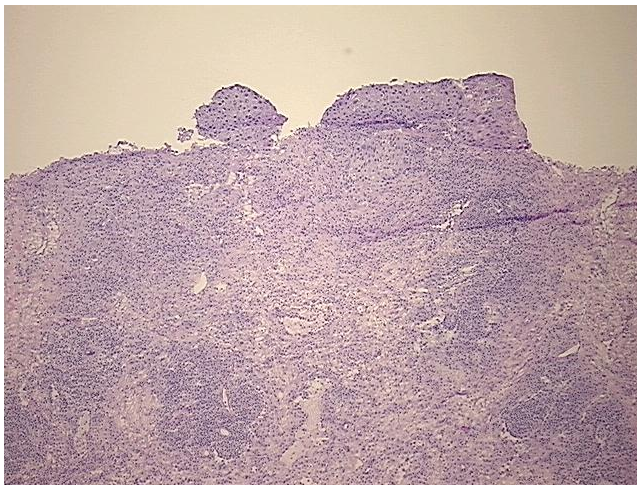
M (Distant metastasis): MX

Diagnostic Test Results: Verhoeff–Van Gieson ~ Elastin stain, Reported as Performed or Reviewed

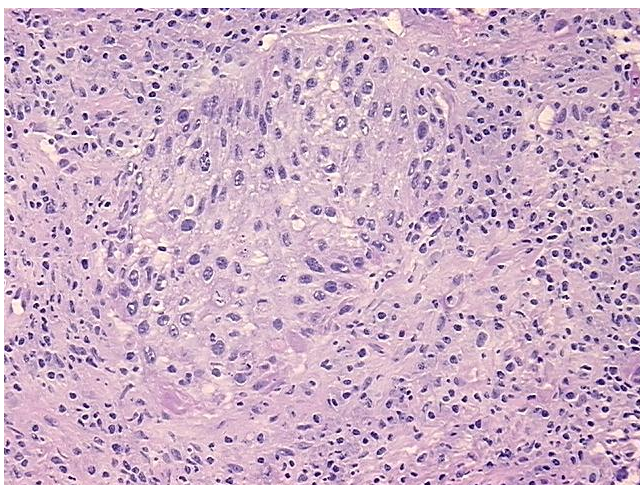
Storage: Store frozen tissue sections at –80°C.

Stability: All frozen tissue sections are stable for 1 year from date of purchase if stored at –80°C without repeated freeze/thaws.

Product images:



4x Image



20x Image