

Product datasheet for **CS532980**

Frozen Tissue Sections, Breast

Product data:

Product Type:	Frozen Sections
Disease State:	Normal
Diagnosis Category:	Normal
Tissue:	Breast
Frozen Sample ID:	FR0002F9F3
Case ID:	CI0000013187
Tissue of Origin:	Breast
Site of Finding:	Breast
Appearance:	R
Sample Diagnosis (from Pathology Verification):	Within normal limits
Normal:	100%
Lesional:	0%
Tumor:	0%
Tumor Hypo/Acellular Stroma:	0%
Tumor Hypercellular Stroma:	0%
Necrosis:	0%
Pathology Verification notes from H&E review:	10% glandular epithelium, 65% stroma, 25% adipose tissue



CASE Diagnosis (from medical center path report): Carcinoma of breast, squamous cell

Age: 54

Gender: Female

Race: Black or African American

Tumor Grade: Nottingham G3: 8-9 points High combined grade (unfavorable)

Minimum Stage Grouping: IIB

T (Extent of Primary Tumor): T2

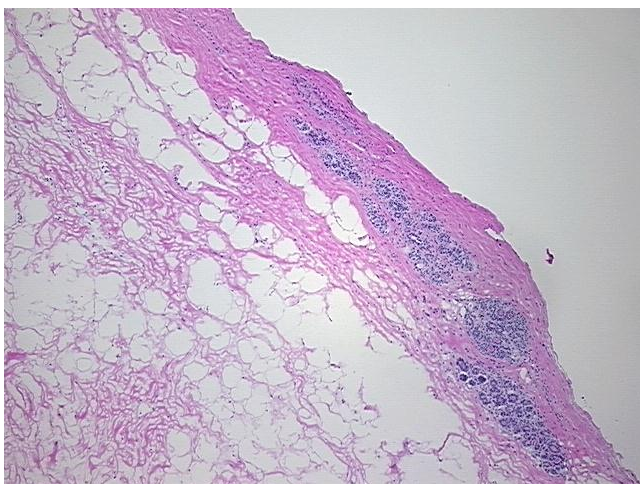
N (Lymph node metastasis): N1a

M (Distant metastasis): MX

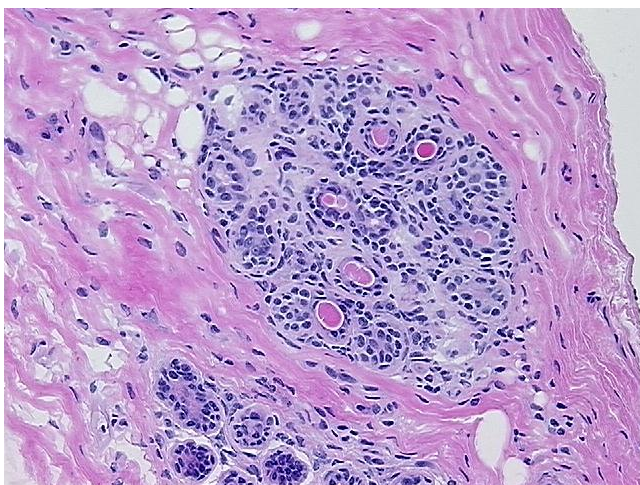
Storage: Store frozen tissue sections at -80°C.

Stability: All frozen tissue sections are stable for 1 year from date of purchase if stored at -80°C without repeated freeze/thaws.

Product images:



4x Image



20x Image