

Product datasheet for **CS532838**

Frozen Tissue Sections, Lung

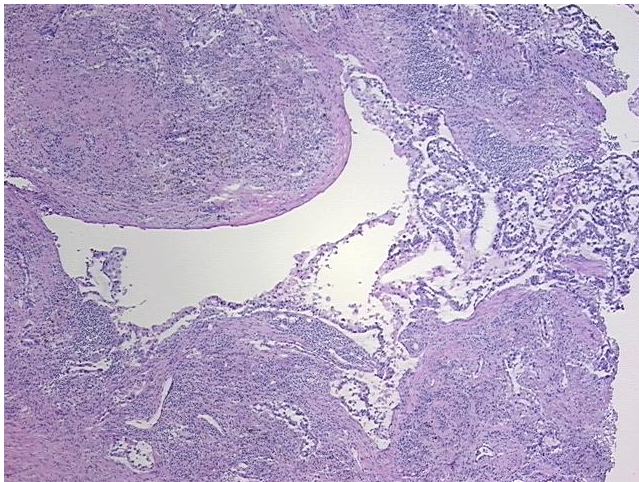
Product data:

Product Type:	Frozen Sections
Disease State:	Cancer
Diagnosis Category:	Lung Cancer
Tissue:	Lung
Frozen Sample ID:	FR0002F9E4
Case ID:	CI0000013163
Tissue of Origin:	Lung
Site of Finding:	Lung
Appearance:	T
Sample Diagnosis (from Pathology Verification):	Adenocarcinoma of lung (EGFR+)
Normal:	0%
Lesional:	0%
Tumor:	25%
Tumor Hypo/Acellular Stroma:	25%
Tumor Hypercellular Stroma:	50%
Necrosis:	0%
Pathology Verification notes from H&E review:	Tumor Stroma (Cellular): Desmoplastic reaction, Inflammatory cells; Tumor Stroma (Hypo/Acellular): Fibrosis; Inflammation: Severe Mixed inflammatory infiltrate
CASE Diagnosis (from medical center path report):	Adenocarcinoma of lung
Age:	59
Gender:	Female
Race:	White or Caucasian

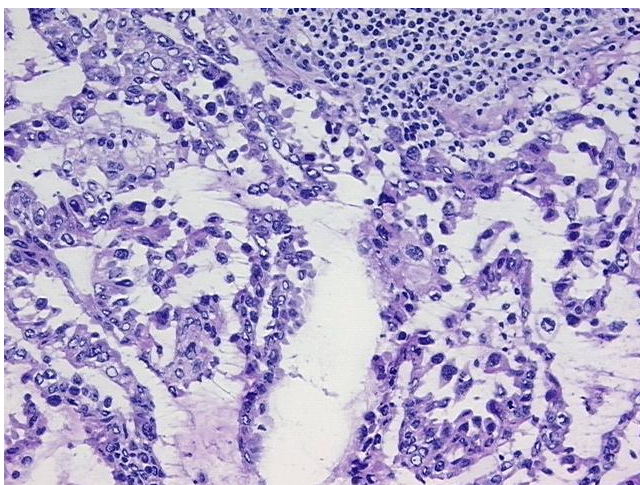


[View online »](#)

Tumor Grade:	AJCC G2: Moderately differentiated
Minimum Stage Grouping:	IB
T (Extent of Primary Tumor):	T2
N (Lymph node metastasis):	N0
M (Distant metastasis):	MX
Diagnostic Test Results:	Verhoeff-Van Gieson ~ Elastin stain, Pleura not involved; Ki67 ~ MIB1 ! by IHC, High; ERBB1 ~ EGFR ~ Epidermal growth factor receptor ! by IHC, Positive; DNA ploidy ~ Cell ploidy, Aneuploid: DI not 0.5 or 1.0 or 2.0; HER2 ~ ERBB2 ~ Neu ! by IHC
Storage:	Store frozen tissue sections at -80°C.
Stability:	All frozen tissue sections are stable for 1 year from date of purchase if stored at -80°C without repeated freeze/thaws.

Product images:

4x Image



20x Image