

Product datasheet for **CS532834**

Frozen Tissue Sections, Lung

Product data:

Product Type:	Frozen Sections
Disease State:	Other Disease
Diagnosis Category:	Pneumonia
Tissue:	Lung
Frozen Sample ID:	FR0002F9DB
Case ID:	CI0000013163
Tissue of Origin:	Lung
Site of Finding:	Lung
Appearance:	L
Sample Diagnosis (from Pathology Verification):	Pneumonia, post-obstructive
Normal:	0%
Lesional:	100%
Tumor:	0%
Tumor Hypo/Acellular Stroma:	0%
Tumor Hypercellular Stroma:	0%
Necrosis:	0%
Pathology Verification notes from H&E review:	Inflammation: Mild Lymphoid infiltrate, Mild Macrophages; Non Tumor Structures: 100% No normal architecture



[View online »](#)

CASE Diagnosis (from medical center path report): Adenocarcinoma of lung

Age: 59

Gender: Female

Race: White or Caucasian

Tumor Grade: AJCC G2: Moderately differentiated

Minimum Stage Grouping: IB

T (Extent of Primary Tumor): T2

N (Lymph node metastasis): N0

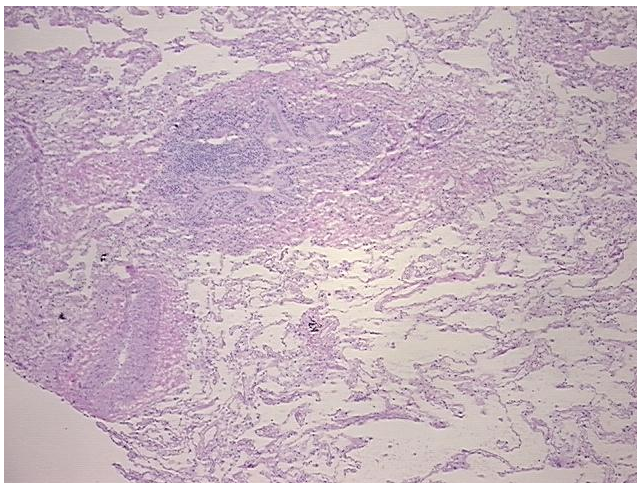
M (Distant metastasis): MX

Diagnostic Test Results: Verhoeff–Van Gieson ~ Elastin stain, Pleura not involved; Ki67 ~ MIB1 ! by IHC, High; ERBB1 ~ EGFR ~ Epidermal growth factor receptor ! by IHC, Positive; DNA ploidy ~ Cell ploidy, Aneuploid: DI not 0.5 or 1.0 or 2.0; HER2 ~ ERBB2 ~ Neu ! by IHC

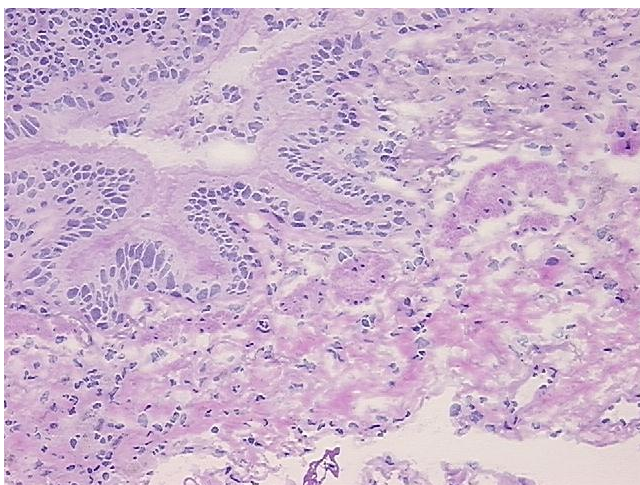
Storage: Store frozen tissue sections at -80°C.

Stability: All frozen tissue sections are stable for 1 year from date of purchase if stored at -80°C without repeated freeze/thaws.

Product images:



4x Image



20x Image