

## Product datasheet for **CS532690**

### Frozen Tissue Sections, Colon: sigmoid

#### Product data:

Product Type:	Frozen Sections
Disease State:	Normal
Diagnosis Category:	Normal
Tissue:	Colon
Frozen Sample ID:	FR00033FC4
Case ID:	CI0000013110
Tissue of Origin:	Colon: sigmoid
Site of Finding:	Colon: sigmoid
Appearance:	R
Sample Diagnosis (from Pathology Verification):	Within normal limits
Normal:	100%
Lesional:	0%
Tumor:	0%
Tumor Hypo/Acellular Stroma:	0%
Tumor Hypercellular Stroma:	0%
Necrosis:	0%
Pathology Verification notes from H&E review:	Non Tumor Structures: 10% Mucosa, 10% Submucosa, 80% Muscle



**CASE Diagnosis (from medical center path report):** Diverticulitis of colon

**Age:** 40

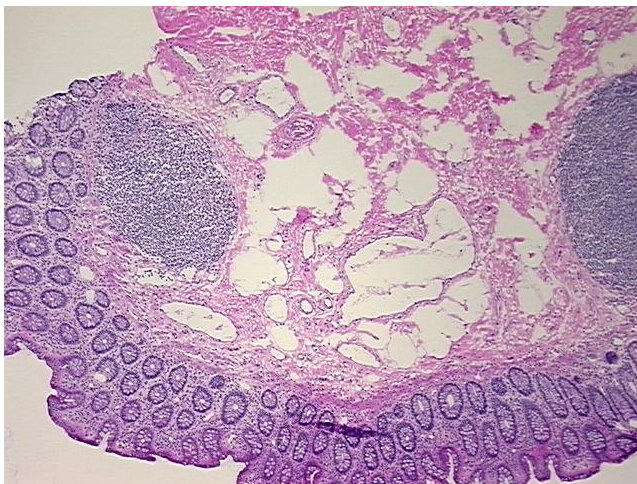
**Gender:** Male

**Race:** White or Caucasian

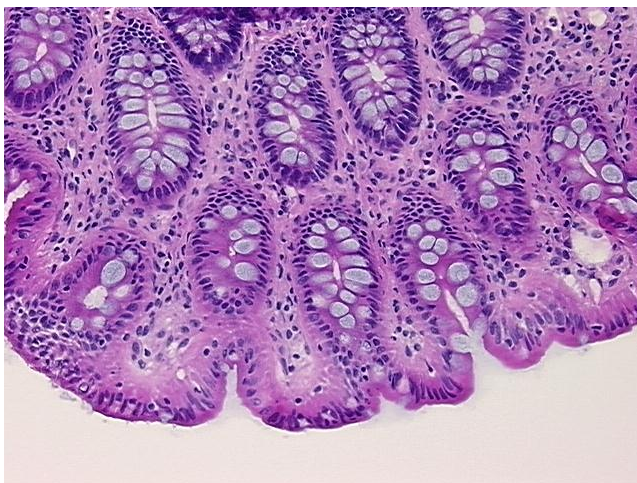
**Storage:** Store frozen tissue sections at  $-80^{\circ}\text{C}$ .

**Stability:** All frozen tissue sections are stable for 1 year from date of purchase if stored at  $-80^{\circ}\text{C}$  without repeated freeze/thaws.

**Product images:**



4x Image



20x Image