

## Product datasheet for CS532432

### Frozen Tissue Sections, Artery: carotid

#### Product data:

|   |  |
|---|--|
| Product Type:                                     | Frozen Sections  |
| Disease State:                                    | Other Disease  |
| Diagnosis Category:                               | Atherosclerosis  |
| Tissue:   | Artery   |
| Frozen Sample ID:                                 | FR00033B74   |
| Case ID:  | CI0000013051   |
| Tissue of Origin:                                 | Artery: carotid  |
| Site of Finding:                                  | Artery: carotid  |
| Appearance:                                       | L  |
| Sample Diagnosis (from Pathology Verification):   | Atherosclerotic plaque                                       |
| Normal:   | 0%   |
| Lesional:   | 100%   |
| Tumor:  | 0%   |
| Tumor Hypo/Acellular Stroma:                      | 0%   |
| Tumor Hypercellular Stroma:                       | 0%   |
| Necrosis:   | 0%   |
| Pathology Verification notes from H&E review:     | Non Tumor Structures: 20% Vessel, 80% Atherosclerotic debris |
| CASE Diagnosis (from medical center path report): | Atherosclerotic plaque                                       |
| Age:  | 83   |
| Gender:   | Female   |
| Race:   | White or Caucasian   |

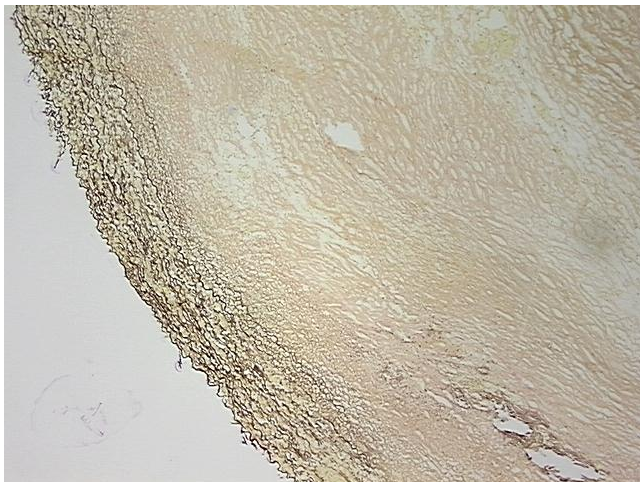


[View online »](#)

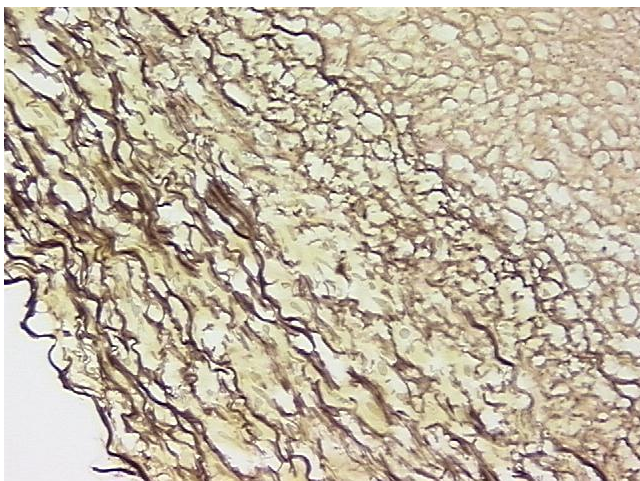
**Storage:** Store frozen tissue sections at -80°C.

**Stability:** All frozen tissue sections are stable for 1 year from date of purchase if stored at -80°C without repeated freeze/thaws.

**Product images:**



4x Image



20x Image