

Product datasheet for **CS532412**

Frozen Tissue Sections, Colon

Product data:

Product Type:	Frozen Sections
Disease State:	Cancer
Diagnosis Category:	Colorectal Cancer
Tissue:	Colon
Frozen Sample ID:	FR00033AEE
Case ID:	CI0000013046
Tissue of Origin:	Colon
Site of Finding:	Liver
Appearance:	T
Sample Diagnosis (from Pathology Verification):	Adenocarcinoma of colon, metastatic
Normal:	0%
Lesional:	0%
Tumor:	20%
Tumor Hypo/Acellular Stroma:	0%
Tumor Hypercellular Stroma:	10%
Necrosis:	70%
Pathology Verification notes from H&E review:	Tumor Stroma (Cellular): Desmoplastic reaction



[View online »](#)

CASE Diagnosis (from medical center path report): Adenocarcinoma of colon, metastatic

Age: 66

Gender: Female

Race: White or Caucasian

Tumor Grade: AJCC G2: Moderately differentiated

Minimum Stage Grouping: IV

T (Extent of Primary Tumor): TX

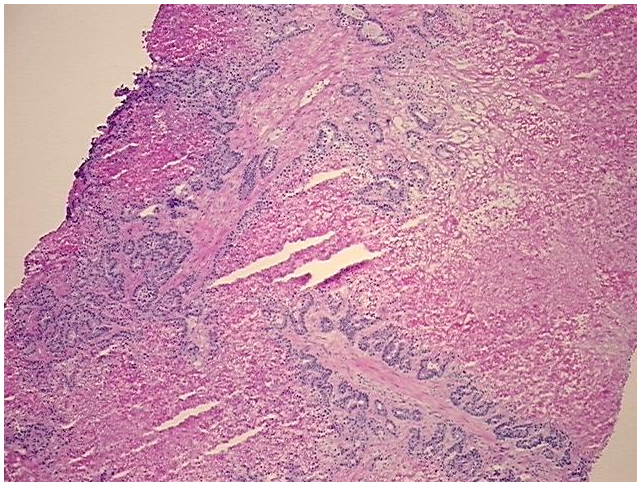
N (Lymph node metastasis): NX

M (Distant metastasis): M1

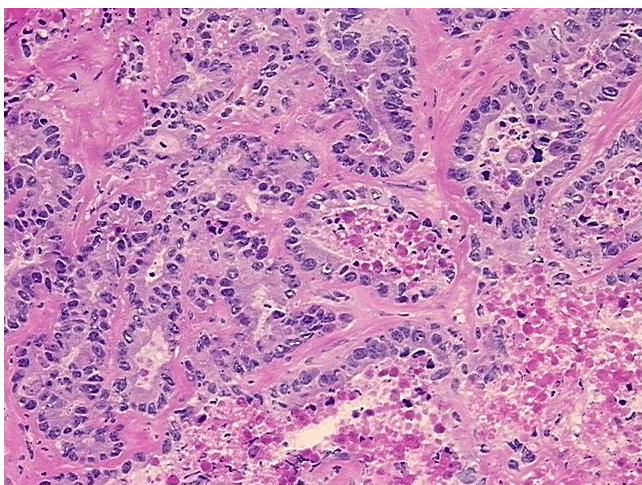
Storage: Store frozen tissue sections at -80°C.

Stability: All frozen tissue sections are stable for 1 year from date of purchase if stored at -80°C without repeated freeze/thaws.

Product images:



4x Image



20x Image