

Product datasheet for CS531912

Frozen Tissue Sections, Neural tissue

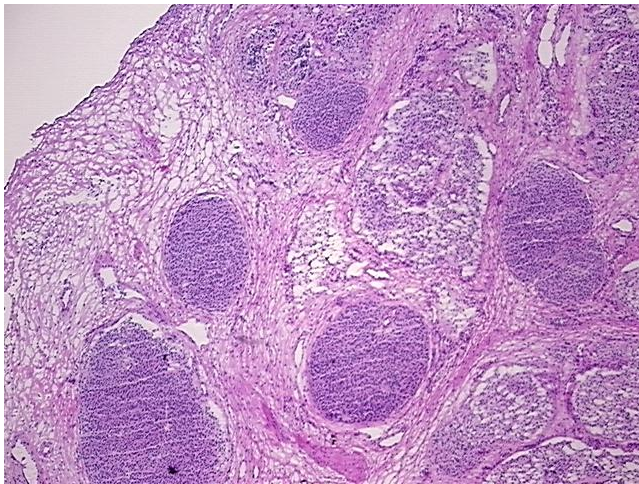
Product data:

Product Type:	Frozen Sections
Disease State:	Cancer
Diagnosis Category:	Neuroblastoma
Tissue:	Nerve
Frozen Sample ID:	FR00034CF3
Case ID:	CI0000012790
Tissue of Origin:	Neural tissue
Site of Finding:	Nose
Appearance:	T
Sample Diagnosis (from Pathology Verification):	Neuroblastoma of nose
Normal:	5%
Lesional:	0%
Tumor:	65%
Tumor Hypo/Acellular Stroma:	20%
Tumor Hypercellular Stroma:	10%
Necrosis:	0%
Pathology Verification notes from H&E review:	Esthesioneuroblastoma; hypocellular tumor stroma: fibromyxoid; hypercellular tumor stroma: scattered mixed inflammatory infiltrates
CASE Diagnosis (from medical center path report):	Neuroblastoma of nose
Age:	55
Gender:	Male
Race:	White or Caucasian

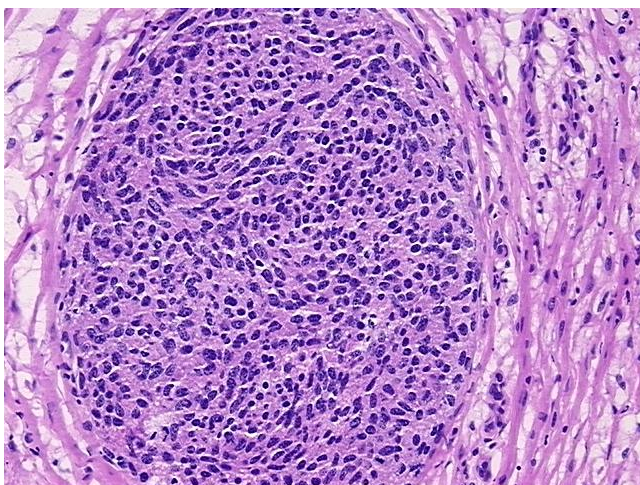


[View online »](#)

Tumor Grade:	WHO Grade II
Minimum Stage Grouping:	Not Reported
T (Extent of Primary Tumor):	Not Reported
N (Lymph node metastasis):	Not Reported
M (Distant metastasis):	Not Reported
Diagnostic Test Results:	Neuron specific enolase ~ NSE ! by IHC,Positive, focal; Glial Fibrillary Acidic Protein ~ GFAP,Negative; S100 protein,Positive, focal; Synaptophysin ~ SYN ! by IHC,Positive, diffuse; Chromogranin A ~ Parathyroid secretory protein 1 ! by IHC,Negati
Storage:	Store frozen tissue sections at -80°C.
Stability:	All frozen tissue sections are stable for 1 year from date of purchase if stored at -80°C without repeated freeze/thaws.

Product images:

4x Image



20x Image