

## Product datasheet for **CS531848**

### Frozen Tissue Sections, Ovary

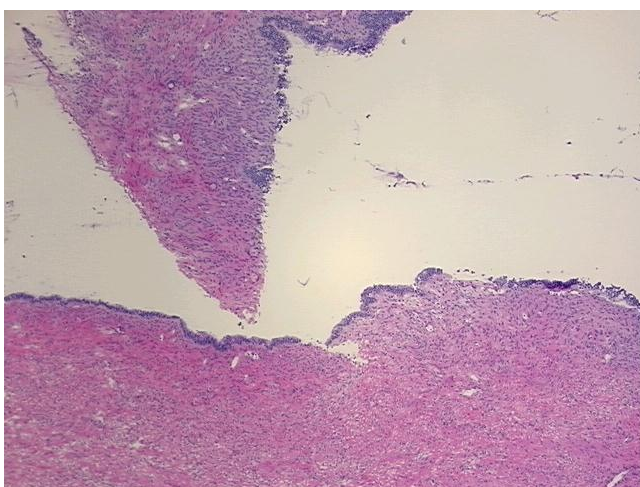
#### Product data:

|   |                                   |
|---|-----------------------------------|
| Product Type:                                     | Frozen Sections                   |
| Disease State:                                    | Other Disease                     |
| Diagnosis Category:                               | Benign Tumors                     |
| Tissue:   | Ovary                             |
| Frozen Sample ID:                                 | FR00034C87                        |
| Case ID:  | CI0000012776                      |
| Tissue of Origin:                                 | Ovary                             |
| Site of Finding:                                  | Ovary                             |
| Appearance:                                       | T                                 |
| Sample Diagnosis (from Pathology Verification):   | Cystadenofibroma of ovary, serous |
| Normal:   | 0%                                |
| Lesional:   | 0%                                |
| Tumor:  | 100%                              |
| Tumor Hypo/Acellular Stroma:                      | 0%                                |
| Tumor Hypercellular Stroma:                       | 0%                                |
| Necrosis:   | 0%                                |
| CASE Diagnosis (from medical center path report): | Cystadenofibroma of ovary, serous |
| Age:  | 59                                |
| Gender:   | Female                            |
| Race:   | White or Caucasian                |
| Tumor Grade:                                      | Not Reported                      |

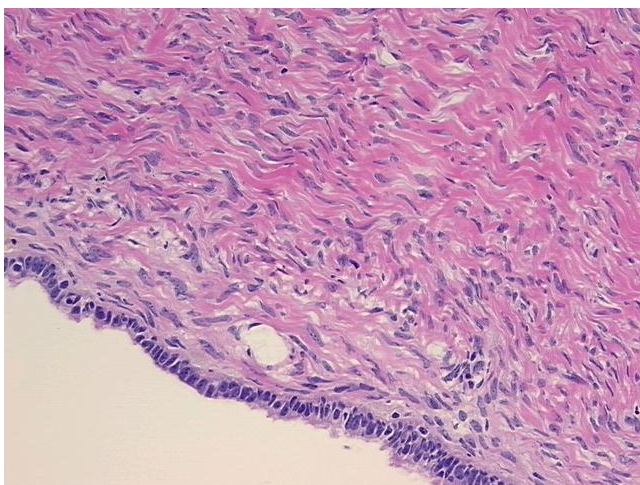


[View online »](#)

|                              |  |
|------------------------------|--|
| Minimum Stage Grouping:      | Not Reported   |
| T (Extent of Primary Tumor): | Not Reported   |
| N (Lymph node metastasis):   | Not Reported   |
| M (Distant metastasis):      | Not Reported   |
| Storage:                     | Store frozen tissue sections at -80°C.   |
| Stability:                   | All frozen tissue sections are stable for 1 year from date of purchase if stored at -80°C without repeated freeze/thaws. |

**Product images:**

4x Image



20x Image