

## Product datasheet for **CS531684**

### Frozen Tissue Sections, Colon: rectosigmoid

#### Product data:

Product Type:	Frozen Sections
Disease State:	Other Disease
Diagnosis Category:	Benign Tumors
Tissue:	Colon
Frozen Sample ID:	FR5B3418A1
Case ID:	CI0000012727
Tissue of Origin:	Colon: rectosigmoid
Site of Finding:	Colon: rectosigmoid
Appearance:	T
Sample Diagnosis (from Pathology Verification):	Adenoma of colon
Normal:	0%
Lesional:	0%
Tumor:	90%
Tumor Hypo/Acellular Stroma:	0%
Tumor Hypercellular Stroma:	10%
Necrosis:	0%
CASE Diagnosis (from medical center path report):	Adenocarcinoma of colon
Age:	49
Gender:	Female
Race:	White or Caucasian
Tumor Grade:	AJCC G1: Well differentiated



[View online »](#)

Minimum Stage Grouping: IIIA

T (Extent of Primary Tumor): T2

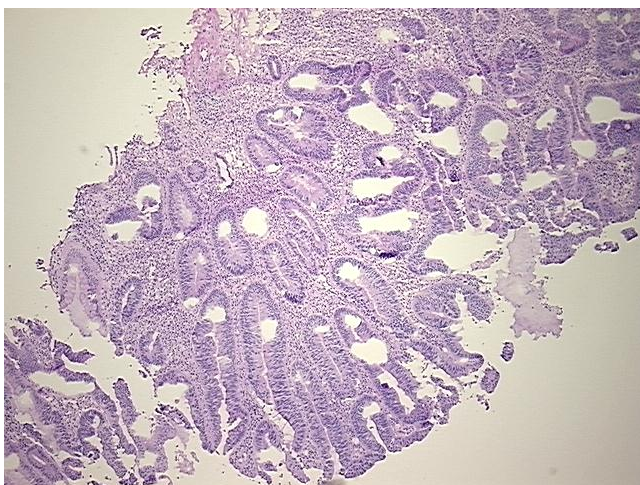
N (Lymph node metastasis): N1

M (Distant metastasis): MX

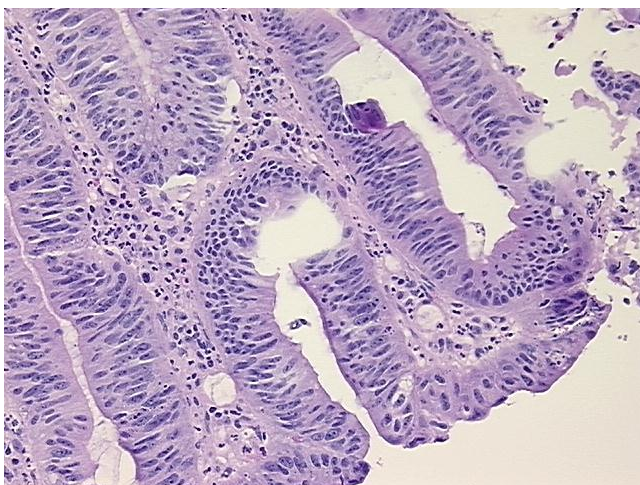
Storage: Store frozen tissue sections at -80°C.

Stability: All frozen tissue sections are stable for 1 year from date of purchase if stored at -80°C without repeated freeze/thaws.

### Product images:



4x Image



20x Image