

## Product datasheet for **CS531554**

### Frozen Tissue Sections, Skin

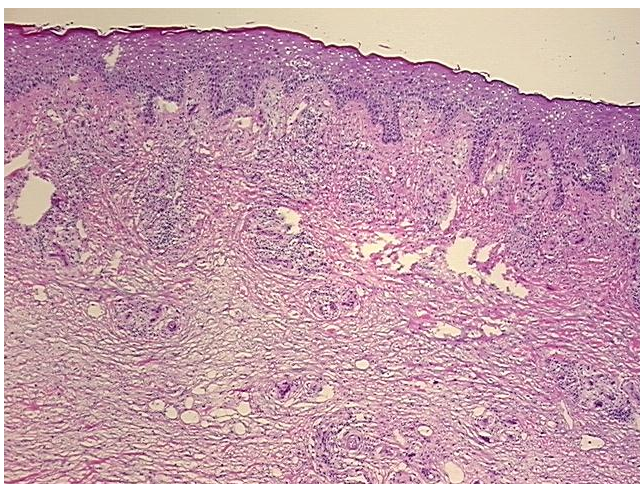
#### Product data:

Product Type:	Frozen Sections
Disease State:	Other Disease
Diagnosis Category:	Dermatitis
Tissue:	Skin
Frozen Sample ID:	FR5B34169A
Case ID:	CI0000012707
Tissue of Origin:	Skin
Site of Finding:	Skin
Appearance:	L
Sample Diagnosis (from Pathology Verification):	Dermatitis
Normal:	0%
Lesional:	100%
Tumor:	0%
Tumor Hypo/Acellular Stroma:	0%
Tumor Hypercellular Stroma:	0%
Necrosis:	0%
Pathology Verification notes from H&E review:	Inflammation: Moderate Mixed inflammatory infiltrate; Non Tumor Structures: 25% Epidermis, 55% Dermis, 20% Subcutaneous tissue
CASE Diagnosis (from medical center path report):	Carcinoma of skin, squamous cell
Age:	74
Gender:	Female
Race:	White or Caucasian

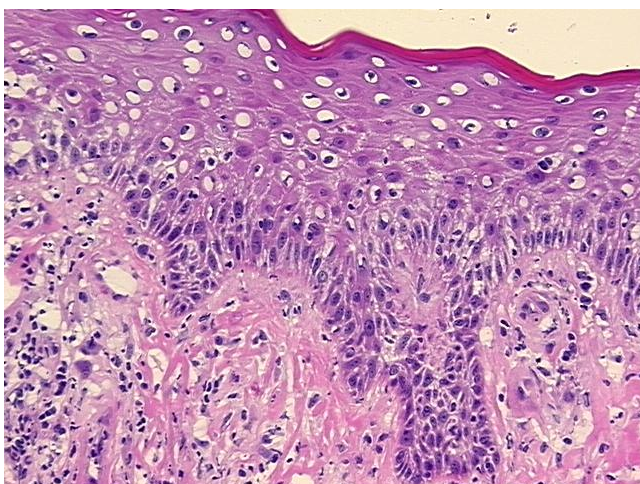


[View online »](#)

Tumor Grade:	AJCC G2: Moderately differentiated
Minimum Stage Grouping:	I
T (Extent of Primary Tumor):	T1
N (Lymph node metastasis):	NX
M (Distant metastasis):	MX
Storage:	Store frozen tissue sections at -80°C.
Stability:	All frozen tissue sections are stable for 1 year from date of purchase if stored at -80°C without repeated freeze/thaws.

**Product images:**

4x Image



20x Image