

Product datasheet for **CS531199**

Frozen Tissue Sections, Tracheobronchial tree

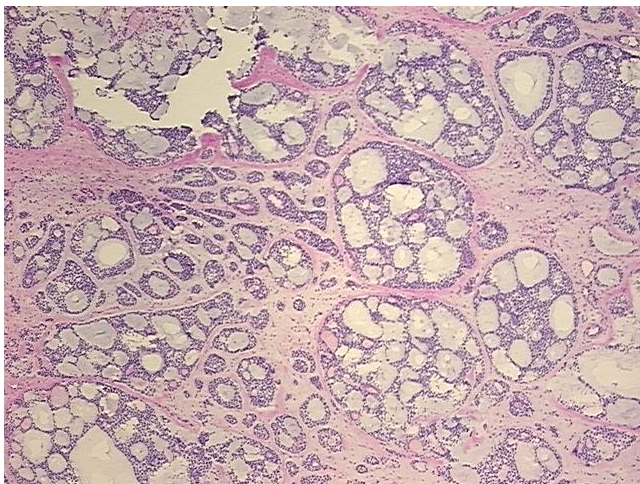
Product data:

Product Type:	Frozen Sections
Disease State:	Cancer
Diagnosis Category:	Head and Neck Cancer
Tissue:	Trachea
Frozen Sample ID:	FR00032962
Case ID:	CI0000012653
Tissue of Origin:	Tracheobronchial tree
Site of Finding:	Tracheoesophagus
Appearance:	T
Sample Diagnosis (from Pathology Verification):	Carcinoma of trachea, adenoid cystic
Normal:	0%
Lesional:	0%
Tumor:	55%
Tumor Hypo/Acellular Stroma:	45%
Tumor Hypercellular Stroma:	0%
Necrosis:	0%
Pathology Verification notes from H&E review:	Tumor Stroma (Hypo/Acellular): Fibrosis, Mucin
CASE Diagnosis (from medical center path report):	Carcinoma of trachea, adenoid cystic
Age:	63
Gender:	Female
Race:	White or Caucasian

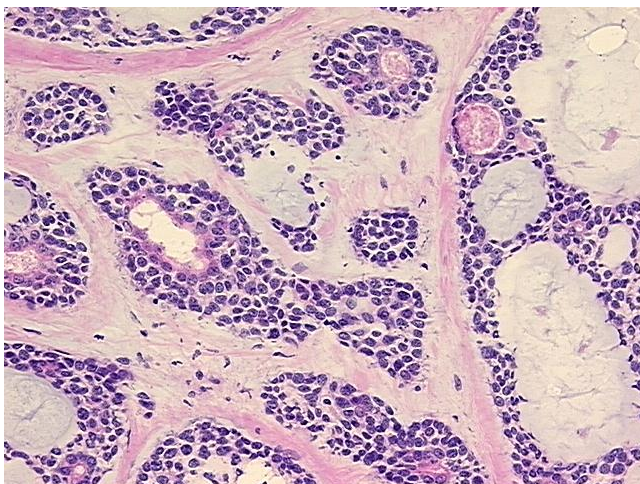


[View online »](#)

Tumor Grade:	Not Reported
Minimum Stage Grouping:	III
T (Extent of Primary Tumor):	T4
N (Lymph node metastasis):	N0
M (Distant metastasis):	MX
Storage:	Store frozen tissue sections at -80°C.
Stability:	All frozen tissue sections are stable for 1 year from date of purchase if stored at -80°C without repeated freeze/thaws.

Product images:

4x Image



20x Image