

## Product datasheet for **CS531193**

### Frozen Tissue Sections, Colon: left

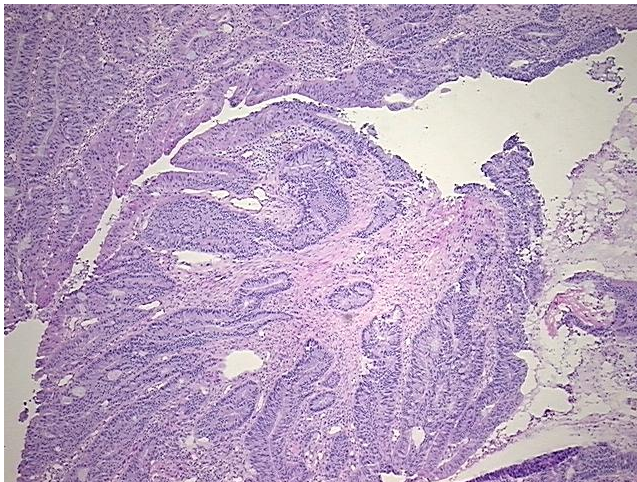
#### Product data:

Product Type:	Frozen Sections
Disease State:	Cancer
Diagnosis Category:	Colorectal Cancer
Tissue:	Colon
Frozen Sample ID:	FR5B339C0A
Case ID:	CI0000012548
Tissue of Origin:	Colon: left
Site of Finding:	Colon: left
Appearance:	T
Sample Diagnosis (from Pathology Verification):	Adenocarcinoma of colon
Normal:	25%
Lesional:	0%
Tumor:	45%
Tumor Hypo/Acellular Stroma:	15%
Tumor Hypercellular Stroma:	15%
Necrosis:	0%
CASE Diagnosis (from medical center path report):	Adenocarcinoma of colon

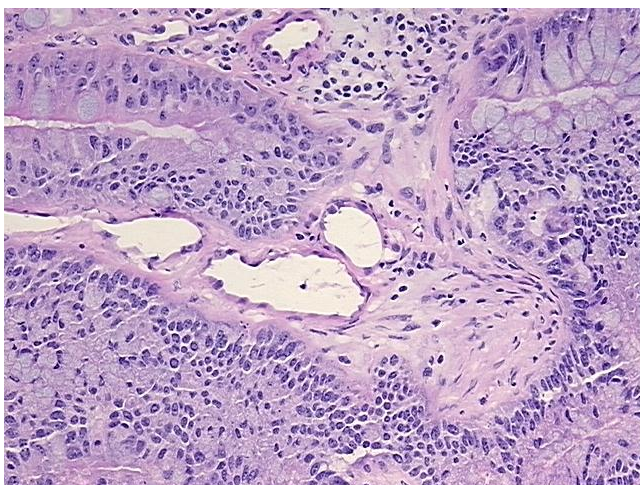


<b>Age:</b>	64
<b>Gender:</b>	Male
<b>Race:</b>	Black or African American
<b>Tumor Grade:</b>	AJCC G2: Moderately differentiated
<b>Minimum Stage Grouping:</b>	IIA
<b>T (Extent of Primary Tumor):</b>	T3
<b>N (Lymph node metastasis):</b>	N0
<b>M (Distant metastasis):</b>	M0
<b>Storage:</b>	Store frozen tissue sections at -80°C.
<b>Stability:</b>	All frozen tissue sections are stable for 1 year from date of purchase if stored at -80°C without repeated freeze/thaws.

**Product images:**



4x Image



20x Image