

Product datasheet for CS531117

Frozen Tissue Sections, Lymph node

Product data:

Product Type:	Frozen Sections
Disease State:	Other Disease
Diagnosis Category:	Hyperplasia
Tissue:	Lymph node
Frozen Sample ID:	FR00034993
Case ID:	CI0000012504
Tissue of Origin:	Lymph node
Site of Finding:	Lymph node
Appearance:	L
Sample Diagnosis (from Pathology Verification):	Follicular hyperplasia of lymph node
Normal:	0%
Lesional:	100%
Tumor:	0%
Tumor Hypo/Acellular Stroma:	0%
Tumor Hypercellular Stroma:	0%
Necrosis:	0%
Pathology Verification notes from H&E review:	Non Tumor Structures: 100% Follicles
CASE Diagnosis (from medical center path report):	Follicular hyperplasia of lymph node
Age:	39
Gender:	Female
Race:	White or Caucasian



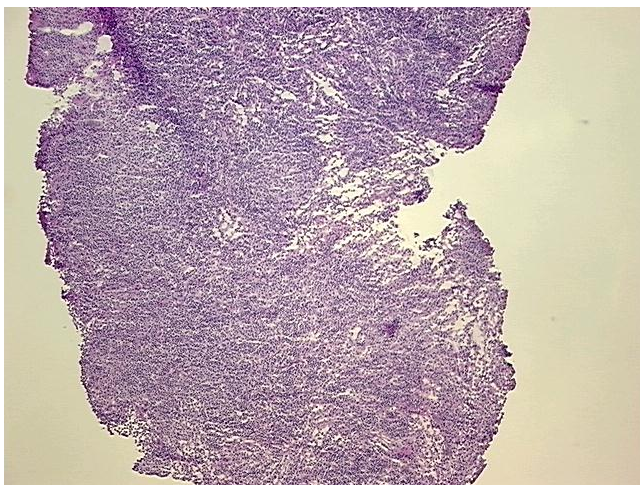
[View online »](#)

Diagnostic Test Results: CD3 polyclonal,Positive; Kappa light chain ! by FC,Positive, polyclonal; Lambda light chain ! by FC,Positive, polyclonal; CD8 ~ Leu2a ~ T8 ! by IHC,Positive; CD5 ~ Leu1 ! by IHC,Negative; CD4 ~ Leu3a ! by IHC,Positive; CD10 ~ CALLA ~ Common AL

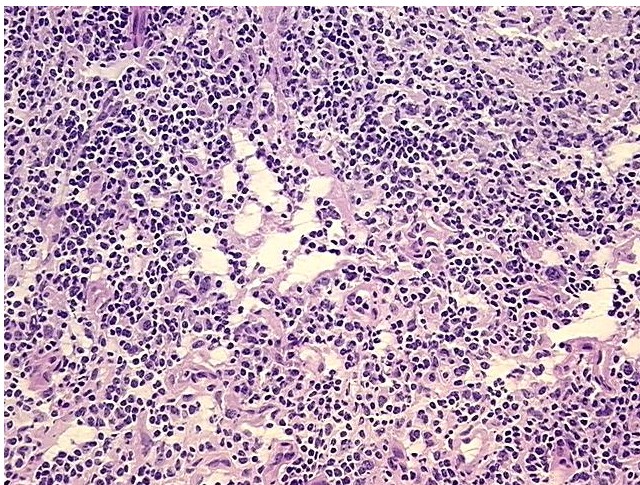
Storage: Store frozen tissue sections at -80°C.

Stability: All frozen tissue sections are stable for 1 year from date of purchase if stored at -80°C without repeated freeze/thaws.

Product images:



4x Image



20x Image