

Product datasheet for **CS531086**

Frozen Tissue Sections, Pituitary gland

Product data:

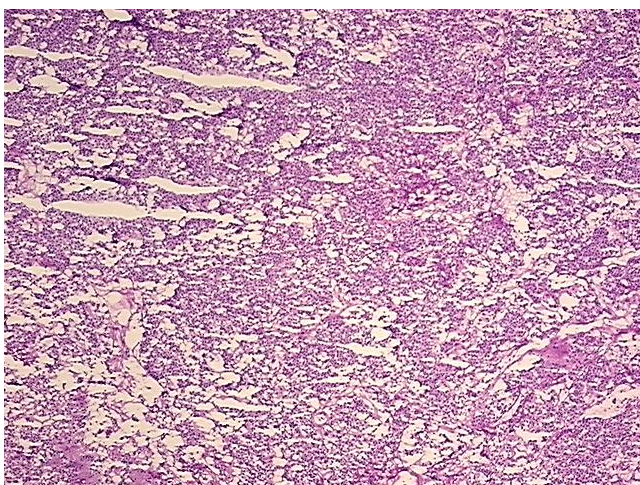
Product Type:	Frozen Sections
Disease State:	Other Disease
Diagnosis Category:	Benign Tumors
Tissue:	Pituitary gland
Frozen Sample ID:	FR000348BB
Case ID:	CI0000012495
Tissue of Origin:	Pituitary gland
Site of Finding:	Pituitary gland
Appearance:	T
Sample Diagnosis (from Pathology Verification):	Adenoma of pituitary gland
Normal:	0%
Lesional:	0%
Tumor:	90%
Tumor Hypo/Acellular Stroma:	10%
Tumor Hypercellular Stroma:	0%
Necrosis:	0%
Pathology Verification notes from H&E review:	Tumor Stroma (Hypo/Acellular): Fibrosis
CASE Diagnosis (from medical center path report):	Adenoma of pituitary gland
Age:	73
Gender:	Female
Race:	Black or African American



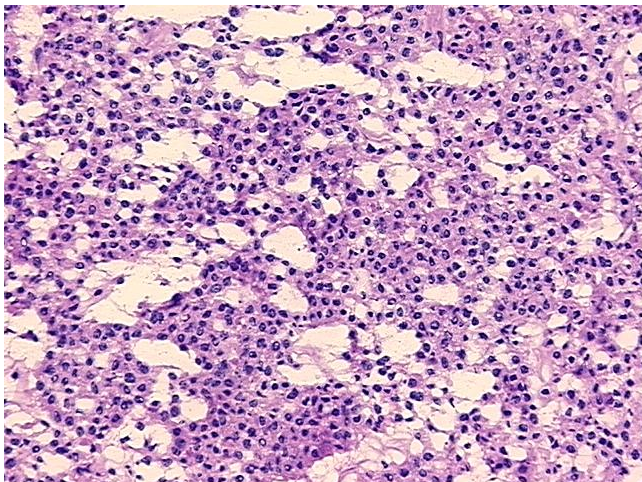
[View online »](#)

Tumor Grade:	Not Reported
Minimum Stage Grouping:	Not Reported
T (Extent of Primary Tumor):	Not Reported
N (Lymph node metastasis):	Not Reported
M (Distant metastasis):	Not Reported
Diagnostic Test Results:	Proliferation index ~ PI,Low; Luteinizing Hormone ~ LH,Negative; Thyroid Stimulating Hormone ~ TSH,Negative; Prolactin ~ Luteotropic hormone ~ Lactogenic hormone ! by IHC,Negative; Synaptophysin ~ SYN ! by IHC,Positive; FSH ~ Follicle Stimul
Storage:	Store frozen tissue sections at -80°C.
Stability:	All frozen tissue sections are stable for 1 year from date of purchase if stored at -80°C without repeated freeze/thaws.

Product images:



4x Image



20x Image