

## Product datasheet for CS530902

### Frozen Tissue Sections, Ileum

#### Product data:

Product Type:	Frozen Sections
Disease State:	Normal
Diagnosis Category:	Normal
Tissue:	Small intestine
Frozen Sample ID:	FR5B339CE5
Case ID:	CI0000012416
Tissue of Origin:	Ileum
Site of Finding:	Ileum
Appearance:	R
Sample Diagnosis (from Pathology Verification):	Within normal limits
Normal:	100%
Lesional:	0%
Tumor:	0%
Tumor Hypo/Acellular Stroma:	0%
Tumor Hypercellular Stroma:	0%
Necrosis:	0%
Pathology Verification notes from H&E review:	Non Tumor Structures: 40% Mucosa, 25% Submucosa, 35% Muscle
CASE Diagnosis (from medical center path report):	Crohns disease
Age:	47
Gender:	Male
Race:	White or Caucasian

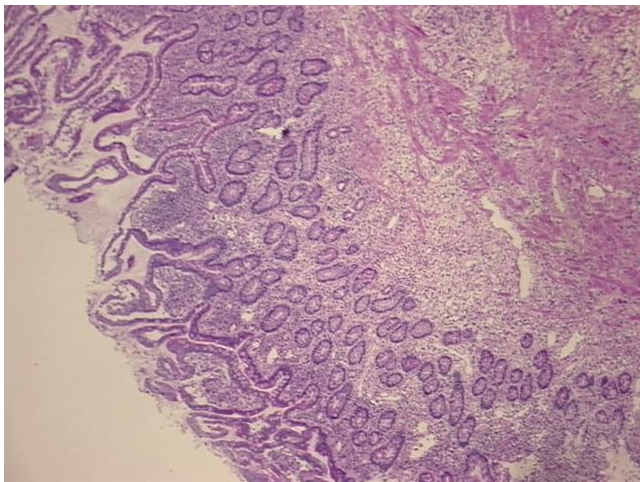


[View online »](#)

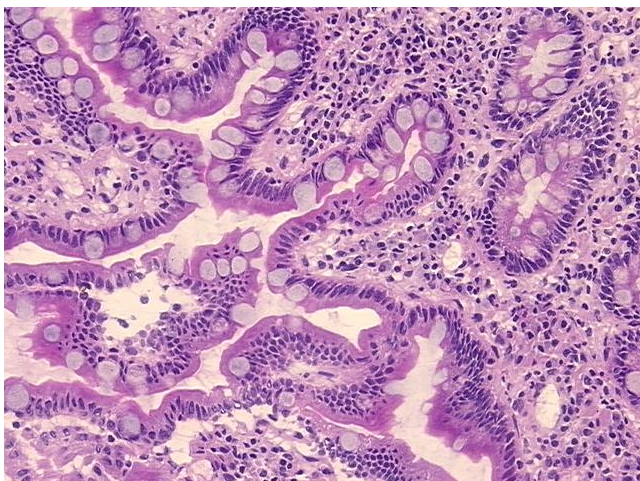
**Storage:** Store frozen tissue sections at  $-80^{\circ}\text{C}$ .

**Stability:** All frozen tissue sections are stable for 1 year from date of purchase if stored at  $-80^{\circ}\text{C}$  without repeated freeze/thaws.

**Product images:**



4x Image



20x Image