

Product datasheet for CS530798

Frozen Tissue Sections, Bile duct

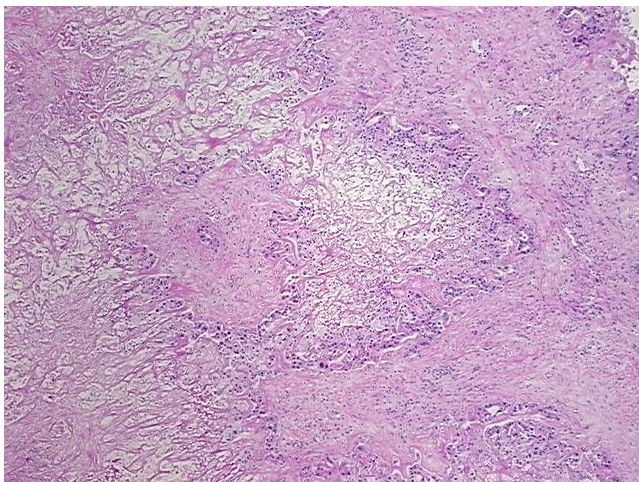
Product data:

Product Type:	Frozen Sections
Disease State:	Cancer
Diagnosis Category:	Liver Cancer
Tissue:	Bile duct
Frozen Sample ID:	FR0003209D
Case ID:	CI0000012342
Tissue of Origin:	Bile duct
Site of Finding:	Liver
Appearance:	T
Sample Diagnosis (from Pathology Verification):	Cholangiocarcinoma of liver
Normal:	0%
Lesional:	0%
Tumor:	15%
Tumor Hypo/Acellular Stroma:	15%
Tumor Hypercellular Stroma:	0%
Necrosis:	70%
Pathology Verification notes from H&E review:	Tumor Stroma (Hypo/Acellular): Fibrosis
CASE Diagnosis (from medical center path report):	Cholangiocarcinoma of liver
Age:	53
Gender:	Male
Race:	White or Caucasian

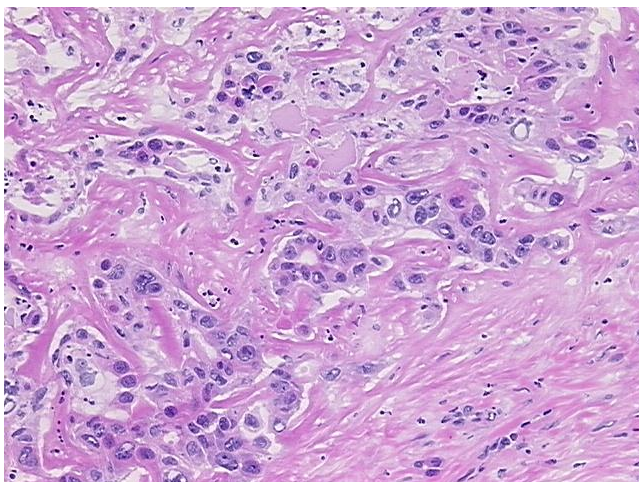


[View online »](#)

Tumor Grade:	AJCC G2: Moderately differentiated
Minimum Stage Grouping:	IIIA
T (Extent of Primary Tumor):	T3
N (Lymph node metastasis):	NX
M (Distant metastasis):	MX
Storage:	Store frozen tissue sections at -80°C.
Stability:	All frozen tissue sections are stable for 1 year from date of purchase if stored at -80°C without repeated freeze/thaws.

Product images:

4x Image



20x Image