

## Product datasheet for CS530697

### Frozen Tissue Sections, Rectum

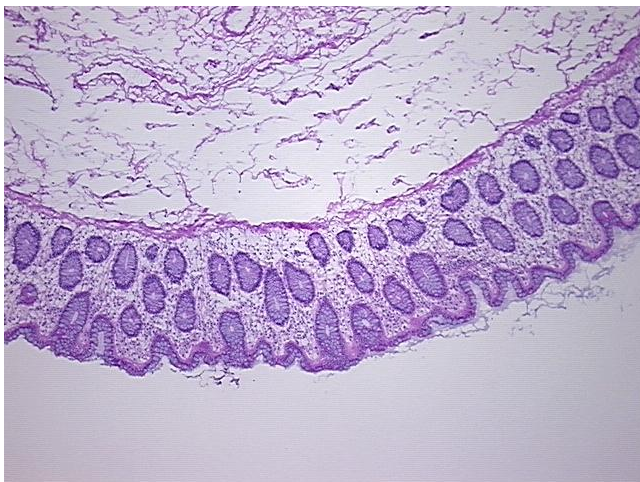
#### Product data:

|   |                                      |
|---|--------------------------------------|
| Product Type:                                     | Frozen Sections                      |
| Disease State:                                    | Normal                               |
| Diagnosis Category:                               | Normal                               |
| Tissue:   | Rectum                               |
| Frozen Sample ID:                                 | FR00031CF0                           |
| Case ID:  | CI0000012279                         |
| Tissue of Origin:                                 | Rectum                               |
| Site of Finding:                                  | Rectum                               |
| Appearance:                                       | R                                    |
| Sample Diagnosis (from Pathology Verification):   | Within normal limits                 |
| Normal:   | 100%                                 |
| Lesional:   | 0%                                   |
| Tumor:  | 0%                                   |
| Tumor Hypo/Acellular Stroma:                      | 0%                                   |
| Tumor Hypercellular Stroma:                       | 0%                                   |
| Necrosis:   | 0%                                   |
| Pathology Verification notes from H&E review:     | 5% mucosa, 15% submucosa, 80% muscle |
| CASE Diagnosis (from medical center path report): | Adenocarcinoma of colon              |
| Age:  | 57                                   |
| Gender:   | Male                                 |
| Race:   | White or Caucasian                   |

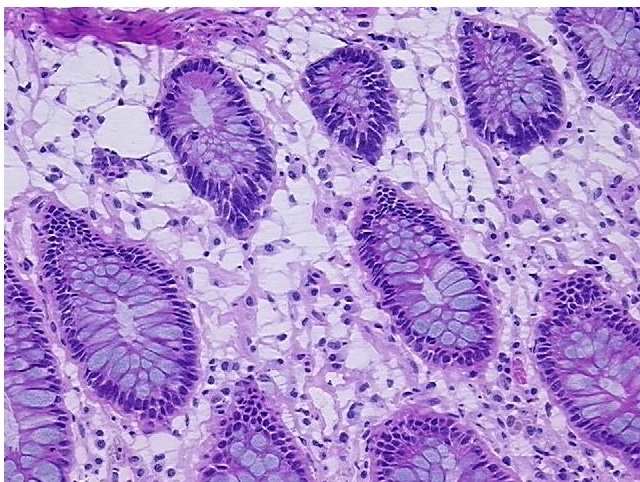


[View online »](#)

|                              |  |
|------------------------------|--|
| Tumor Grade:                 | AJCC G2: Moderately differentiated   |
| Minimum Stage Grouping:      | IV   |
| T (Extent of Primary Tumor): | T3   |
| N (Lymph node metastasis):   | N1   |
| M (Distant metastasis):      | M1   |
| Storage:                     | Store frozen tissue sections at -80°C.   |
| Stability:                   | All frozen tissue sections are stable for 1 year from date of purchase if stored at -80°C without repeated freeze/thaws. |

**Product images:**

4x Image



20x Image