

## Product datasheet for **CS530653**

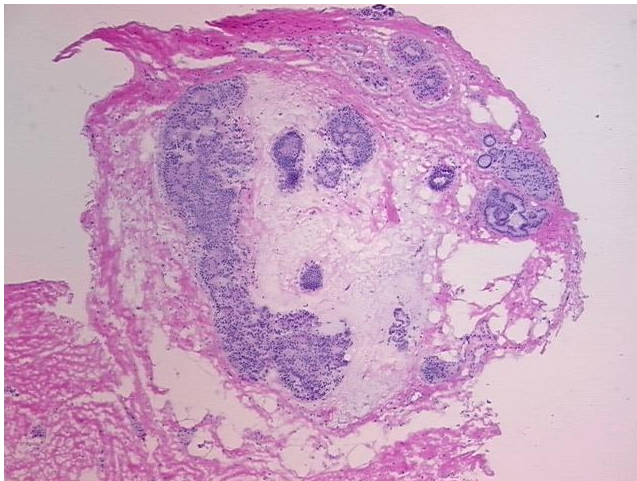
### Frozen Tissue Sections, Breast

#### Product data:

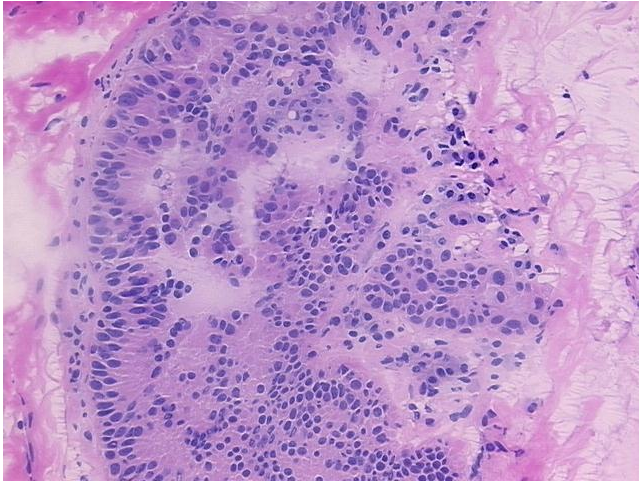
<b>Product Type:</b>	Frozen Sections
<b>Disease State:</b>	Other Disease
<b>Diagnosis Category:</b>	Hyperplasia
<b>Tissue:</b>	Breast
<b>Frozen Sample ID:</b>	FR5B33F751
<b>Case ID:</b>	CI0000012254
<b>Tissue of Origin:</b>	Breast
<b>Site of Finding:</b>	Breast
<b>Appearance:</b>	L
<b>Sample Diagnosis (from Pathology Verification):</b>	Ductal hyperplasia of breast, atypical
<b>Normal:</b>	90%
<b>Lesional:</b>	10%
<b>Tumor:</b>	0%
<b>Tumor Hypo/Acellular Stroma:</b>	0%
<b>Tumor Hypercellular Stroma:</b>	0%
<b>Necrosis:</b>	0%
<b>Pathology Verification notes from H&amp;E review:</b>	normal: 5% glandular epithelium, 80% fibrous stroma, 15% adipose tissue



<b>CASE Diagnosis (from medical center path report):</b>	Adenocarcinoma of breast, ductal
<b>Age:</b>	54
<b>Gender:</b>	Female
<b>Race:</b>	White or Caucasian
<b>Tumor Grade:</b>	Nottingham GX: Grade cannot be assessed
<b>Minimum Stage Grouping:</b>	IIIC
<b>T (Extent of Primary Tumor):</b>	TX
<b>N (Lymph node metastasis):</b>	N3a
<b>M (Distant metastasis):</b>	MX
<b>Diagnostic Test Results:</b>	Progesterone receptor ~ PR ! by IHC,Negative; Estrogen receptor ~ ER ! by IHC,Negative; HER2 ~ ERBB2 ~ Neu ! by IHC,Negative
<b>Storage:</b>	Store frozen tissue sections at -80°C.
<b>Stability:</b>	All frozen tissue sections are stable for 1 year from date of purchase if stored at -80°C without repeated freeze/thaws.

**Product images:**

4x Image



20x Image