

Product datasheet for **CS530642**

Frozen Tissue Sections, Kidney

Product data:

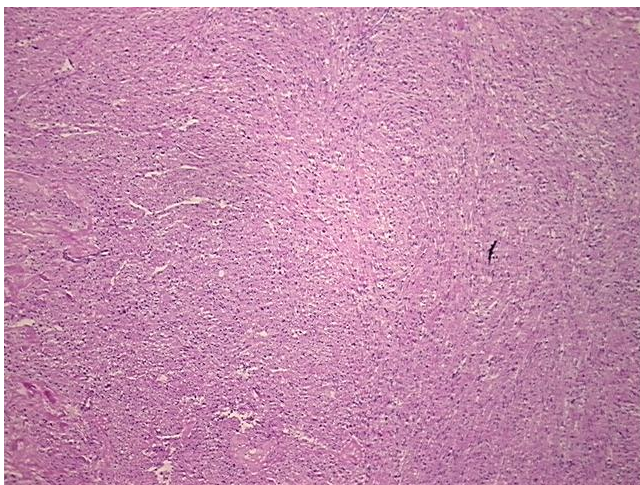
| | |
|---|--------------------------------|
| Product Type: | Frozen Sections |
| Disease State: | Other Disease |
| Diagnosis Category: | Benign Tumors |
| Tissue: | Kidney |
| Frozen Sample ID: | FR65EE42CE |
| Case ID: | CI0000011701 |
| Tissue of Origin: | Kidney |
| Site of Finding: | Kidney |
| Appearance: | T |
| Sample Diagnosis (from Pathology Verification): | Angiomyolipoma of kidney |
| Normal: | 0% |
| Lesional: | 0% |
| Tumor: | 100% |
| Tumor Hypo/Acellular Stroma: | 0% |
| Tumor Hypercellular Stroma: | 0% |
| Necrosis: | 0% |
| CASE Diagnosis (from medical center path report): | Adenocarcinoma of colon |
| Age: | 80 |
| Gender: | Male |
| Race: | White or Caucasian |
| Tumor Grade: | AJCC G3: Poorly differentiated |



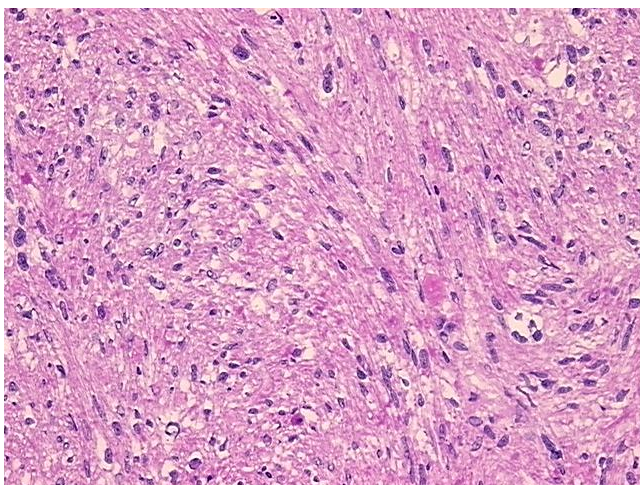
[View online »](#)

| | |
|------------------------------|--|
| Minimum Stage Grouping: | IIIC |
| T (Extent of Primary Tumor): | T3 |
| N (Lymph node metastasis): | N2 |
| M (Distant metastasis): | MX |
| Diagnostic Test Results: | Vimentin ~ VIM ! by IHC,Positive; S100 protein,Negative; HMB45 melanoma antigen ~ GP100 ! by IHC,Positive, focal; Desmin ! by IHC,Positive; MSA ~ Muscle Specific Actin,Positive |
| Storage: | Store frozen tissue sections at -80°C. |
| Stability: | All frozen tissue sections are stable for 1 year from date of purchase if stored at -80°C without repeated freeze/thaws. |

Product images:



4x Image



20x Image