

Product datasheet for **CS530641**

Frozen Tissue Sections, Kidney

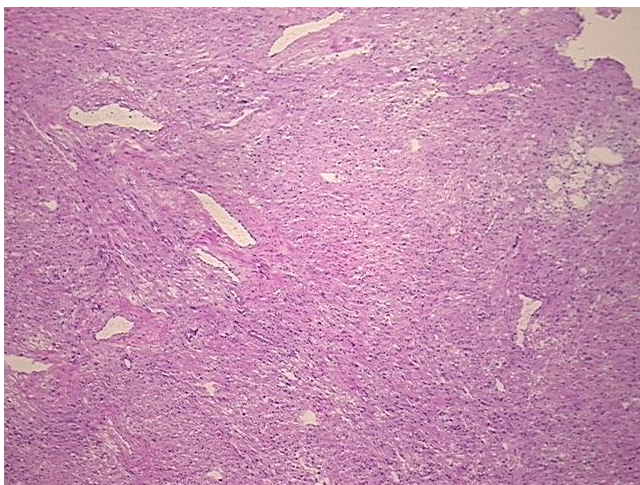
Product data:

Product Type:	Frozen Sections
Disease State:	Other Disease
Diagnosis Category:	Benign Tumors
Tissue:	Kidney
Frozen Sample ID:	FR65EE42CD
Case ID:	CI0000011701
Tissue of Origin:	Kidney
Site of Finding:	Kidney
Appearance:	T
Sample Diagnosis (from Pathology Verification):	Angiomyolipoma of kidney
Normal:	0%
Lesional:	0%
Tumor:	100%
Tumor Hypo/Acellular Stroma:	0%
Tumor Hypercellular Stroma:	0%
Necrosis:	0%
CASE Diagnosis (from medical center path report):	Adenocarcinoma of colon
Age:	80
Gender:	Male
Race:	White or Caucasian
Tumor Grade:	AJCC G3: Poorly differentiated

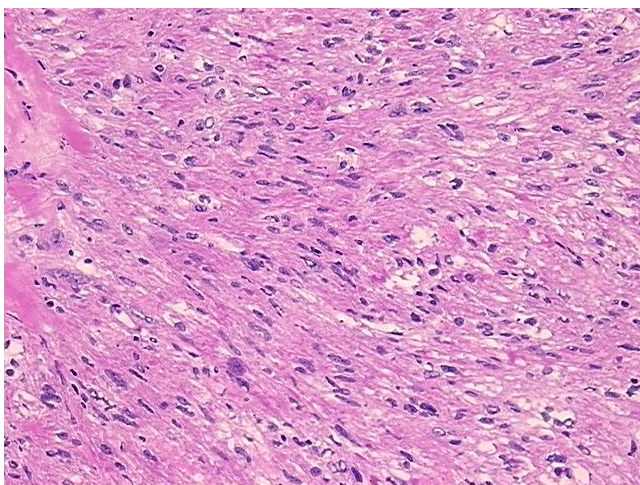


[View online »](#)

Minimum Stage Grouping:	IIIC
T (Extent of Primary Tumor):	T3
N (Lymph node metastasis):	N2
M (Distant metastasis):	MX
Diagnostic Test Results:	Vimentin ~ VIM ! by IHC,Positive; S100 protein,Negative; HMB45 melanoma antigen ~ GP100 ! by IHC,Positive, focal; Desmin ! by IHC,Positive; MSA ~ Muscle Specific Actin,Positive
Storage:	Store frozen tissue sections at -80°C.
Stability:	All frozen tissue sections are stable for 1 year from date of purchase if stored at -80°C without repeated freeze/thaws.

Product images:

4x Image



20x Image