

Product datasheet for **CS530368**

Frozen Tissue Sections, Endometrium

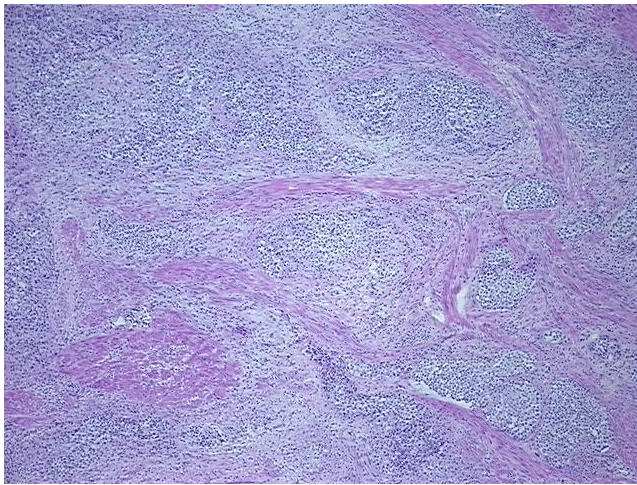
Product data:

Product Type:	Frozen Sections
Disease State:	Cancer
Diagnosis Category:	Endometrial Cancer
Tissue:	Endometrium
Frozen Sample ID:	FR000315AF
Case ID:	CI0000011666
Tissue of Origin:	Endometrium
Site of Finding:	Uterus
Appearance:	T
Sample Diagnosis (from Pathology Verification):	Adenocarcinoma of endometrium, endometrioid
Normal:	55%
Lesional:	0%
Tumor:	44%
Tumor Hypo/Acellular Stroma:	0%
Tumor Hypercellular Stroma:	0%
Necrosis:	1%
Pathology Verification notes from H&E review:	Non Tumor Structures: 95% Myometrium, 5% Serosa; Other Features/Comments: Tumor area: 5 mm x 4 mm
CASE Diagnosis (from medical center path report):	Adenocarcinoma of endometrium, endometrioid
Age:	57
Gender:	Female
Race:	White or Caucasian

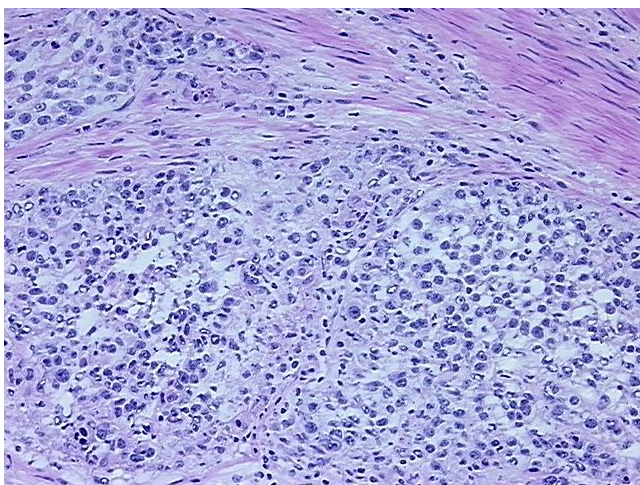


[View online »](#)

Tumor Grade:	FIGO G3: Poorly differentiated
Minimum Stage Grouping:	IIIA
T (Extent of Primary Tumor):	T3a
N (Lymph node metastasis):	NX
M (Distant metastasis):	MX
Diagnostic Test Results:	Progesterone receptor ~ PR ! by IHC,Positive; Estrogen receptor ~ ER ! by IHC,Positive
Storage:	Store frozen tissue sections at -80°C.
Stability:	All frozen tissue sections are stable for 1 year from date of purchase if stored at -80°C without repeated freeze/thaws.

Product images:

4x Image



20x Image