

## Product datasheet for **CS529724**

### Frozen Tissue Sections, Adenoid

#### Product data:

Product Type:	Frozen Sections
Disease State:	Other Disease
Diagnosis Category:	Hyperplasia
Tissue:	Adenoid
Frozen Sample ID:	FR00031D6C
Case ID:	CI0000011396
Tissue of Origin:	Adenoid
Site of Finding:	Adenoid
Appearance:	L
Sample Diagnosis (from Pathology Verification):	Lymphoid hyperplasia of adenoid
Normal:	0%
Lesional:	100%
Tumor:	0%
Tumor Hypo/Acellular Stroma:	0%
Tumor Hypercellular Stroma:	0%
Necrosis:	0%
Pathology Verification notes from H&E review:	Non Tumor Structures: 10% Squamous epithelium, 90% Lymphoid nodules
CASE Diagnosis (from medical center path report):	Lymphoid hyperplasia of adenoid
Age:	20
Gender:	Female
Race:	Black or African American

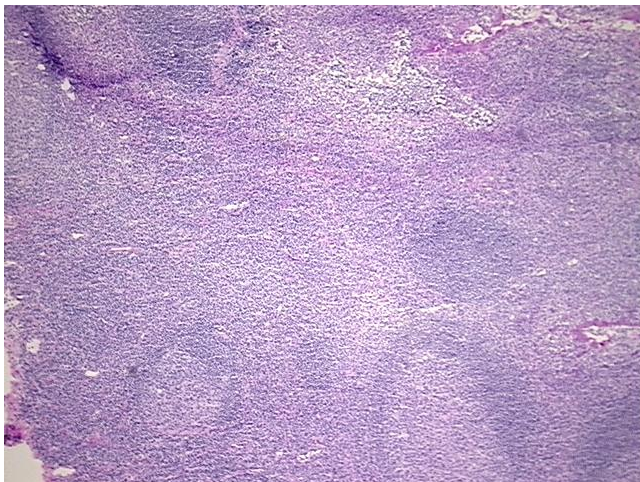


[View online »](#)

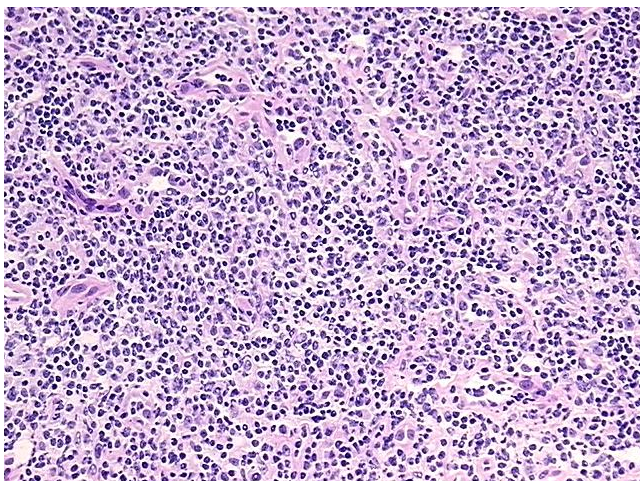
**Storage:** Store frozen tissue sections at -80°C.

**Stability:** All frozen tissue sections are stable for 1 year from date of purchase if stored at -80°C without repeated freeze/thaws.

**Product images:**



4x Image



20x Image