

## Product datasheet for CS529712

### Frozen Tissue Sections, Small intestine

#### Product data:

|   |                                       |
|---|---------------------------------------|
| Product Type:                                     | Frozen Sections                       |
| Disease State:                                    | Normal                                |
| Diagnosis Category:                               | Normal                                |
| Tissue:   | Small intestine                       |
| Frozen Sample ID:                                 | FR5B33F46E                            |
| Case ID:  | CI0000011391                          |
| Tissue of Origin:                                 | Small intestine                       |
| Site of Finding:                                  | Small intestine                       |
| Appearance:                                       | R                                     |
| Sample Diagnosis (from Pathology Verification):   | Within normal limits                  |
| Normal:   | 100%                                  |
| Lesional:   | 0%                                    |
| Tumor:  | 0%                                    |
| Tumor Hypo/Acellular Stroma:                      | 0%                                    |
| Tumor Hypercellular Stroma:                       | 0%                                    |
| Necrosis:   | 0%                                    |
| Pathology Verification notes from H&E review:     | 50% mucosa, 10% submucosa, 40% muscle |
| CASE Diagnosis (from medical center path report): | Crohns disease                        |
| Age:  | 34                                    |
| Gender:   | Male                                  |
| Race:   | White or Caucasian                    |

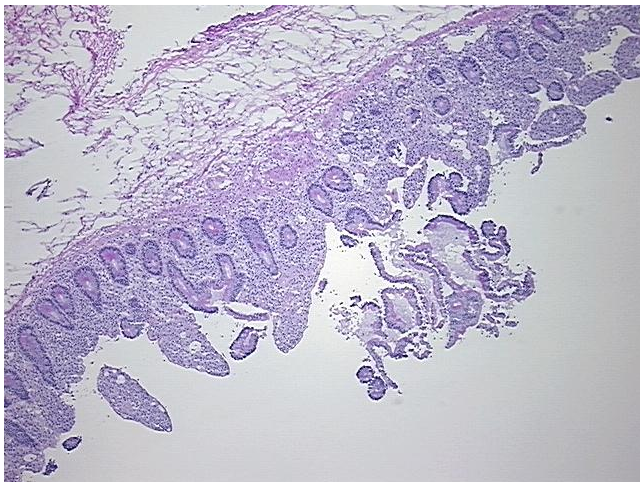


[View online »](#)

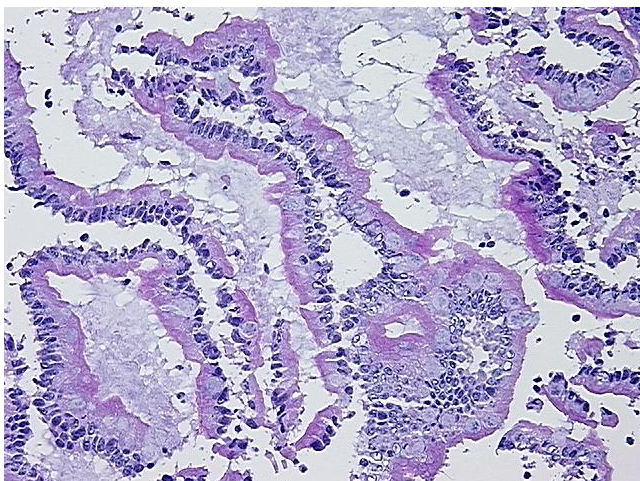
**Storage:** Store frozen tissue sections at -80°C.

**Stability:** All frozen tissue sections are stable for 1 year from date of purchase if stored at -80°C without repeated freeze/thaws.

**Product images:**



4x Image



20x Image