

Product datasheet for **CS529485**

Frozen Tissue Sections, Tongue

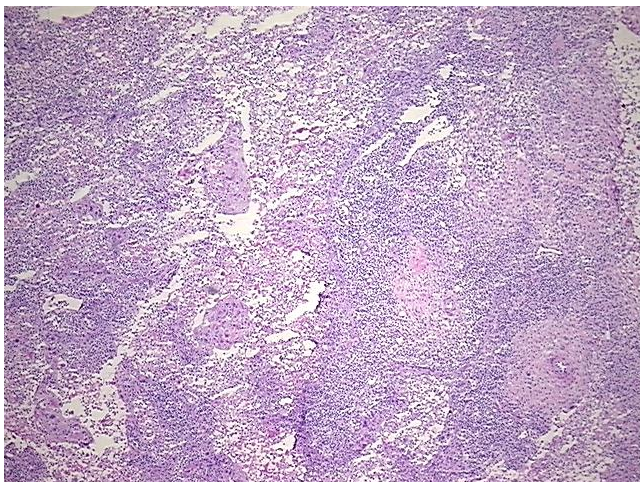
Product data:

Product Type:	Frozen Sections
Disease State:	Cancer
Diagnosis Category:	Head and Neck Cancer
Tissue:	Tongue
Frozen Sample ID:	FR0002E857
Case ID:	CI0000011304
Tissue of Origin:	Tongue
Site of Finding:	Lymph node
Appearance:	T
Sample Diagnosis (from Pathology Verification):	Carcinoma of tongue, squamous cell, metastatic
Normal:	40%
Lesional:	0%
Tumor:	10%
Tumor Hypo/Acellular Stroma:	0%
Tumor Hypercellular Stroma:	10%
Necrosis:	40%
Pathology Verification notes from H&E review:	Tumor: in the lymph node of neck
CASE Diagnosis (from medical center path report):	Carcinoma of tongue, squamous cell
Age:	63
Gender:	Male
Race:	White or Caucasian

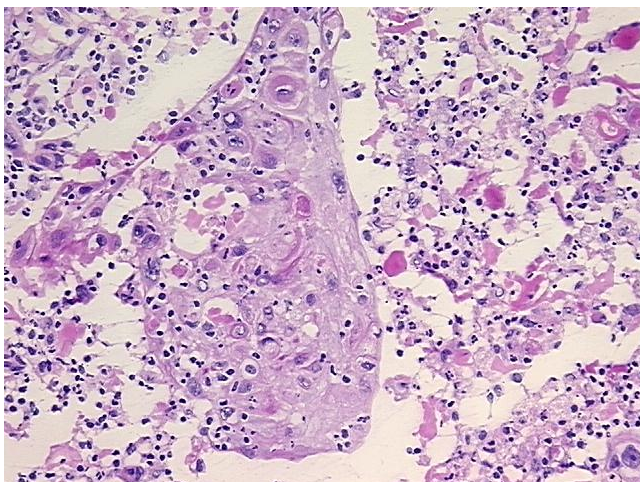


[View online »](#)

Tumor Grade:	AJCC G2: Moderately differentiated
Minimum Stage Grouping:	IVA
T (Extent of Primary Tumor):	T4
N (Lymph node metastasis):	N1
M (Distant metastasis):	MX
Storage:	Store frozen tissue sections at -80°C.
Stability:	All frozen tissue sections are stable for 1 year from date of purchase if stored at -80°C without repeated freeze/thaws.

Product images:

4x Image



20x Image