

## Product datasheet for **CS529083**

### Frozen Tissue Sections, Colon: transverse

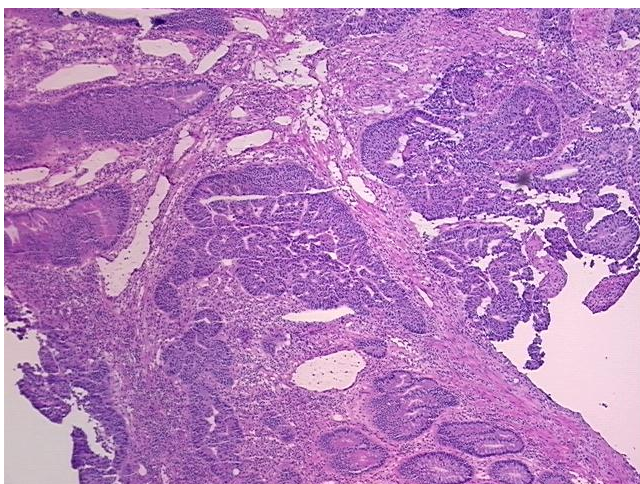
#### Product data:

Product Type:	Frozen Sections
Disease State:	Cancer
Diagnosis Category:	Colorectal Cancer
Tissue:	Colon
Frozen Sample ID:	FR00030CFD
Case ID:	CI0000010902
Tissue of Origin:	Colon: transverse
Site of Finding:	Colon: transverse
Appearance:	T
Sample Diagnosis (from Pathology Verification):	Adenocarcinoma of colon
Normal:	40%
Lesional:	0%
Tumor:	35%
Tumor Hypo/Acellular Stroma:	0%
Tumor Hypercellular Stroma:	25%
Necrosis:	0%
Pathology Verification notes from H&E review:	cellular tumor stroma: 80% desmoplasia, 20% mixed inflammatory cells
CASE Diagnosis (from medical center path report):	Adenocarcinoma of colon
Age:	80
Gender:	Male
Race:	White or Caucasian

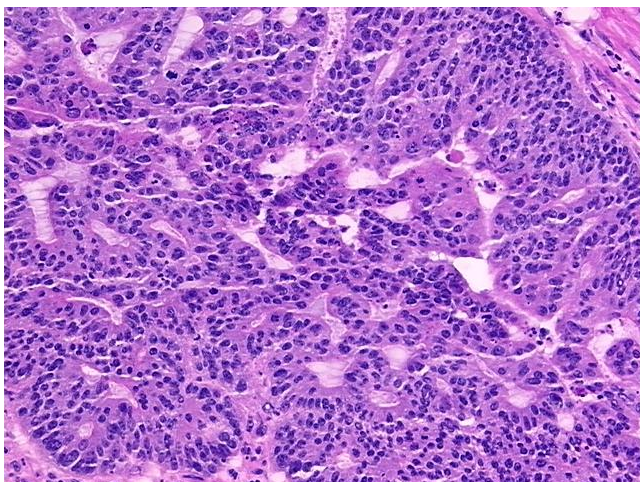

[View online »](#)

<b>Tumor Grade:</b>	AJCC G2: Moderately differentiated
<b>Minimum Stage Grouping:</b>	IIA
<b>T (Extent of Primary Tumor):</b>	T3
<b>N (Lymph node metastasis):</b>	N0
<b>M (Distant metastasis):</b>	MX
<b>Storage:</b>	Store frozen tissue sections at -80°C.
<b>Stability:</b>	All frozen tissue sections are stable for 1 year from date of purchase if stored at -80°C without repeated freeze/thaws.

### Product images:



4x Image



20x Image