

Product datasheet for **CS528953**

Frozen Tissue Sections, Ovary: left

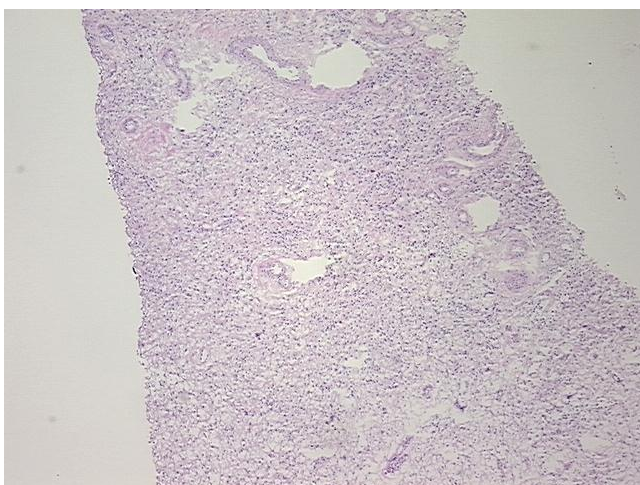
Product data:

| | |
|---|---|
| Product Type: | Frozen Sections |
| Disease State: | Normal |
| Diagnosis Category: | Normal |
| Tissue: | Ovary |
| Frozen Sample ID: | FR00032F27 |
| Case ID: | CI0000010866 |
| Tissue of Origin: | Ovary: left |
| Site of Finding: | Ovary: left |
| Appearance: | R |
| Sample Diagnosis (from Pathology Verification): | Within normal limits |
| Normal: | 100% |
| Lesional: | 0% |
| Tumor: | 0% |
| Tumor Hypo/Acellular Stroma: | 0% |
| Tumor Hypercellular Stroma: | 0% |
| Necrosis: | 0% |
| Pathology Verification notes from H&E review: | Non Tumor Structures: 30% Ovarian stroma, 70% Hilar vessels |
| CASE Diagnosis (from medical center path report): | Adenocarcinoma of endometrium |
| Age: | 68 |
| Gender: | Female |
| Race: | White or Caucasian |

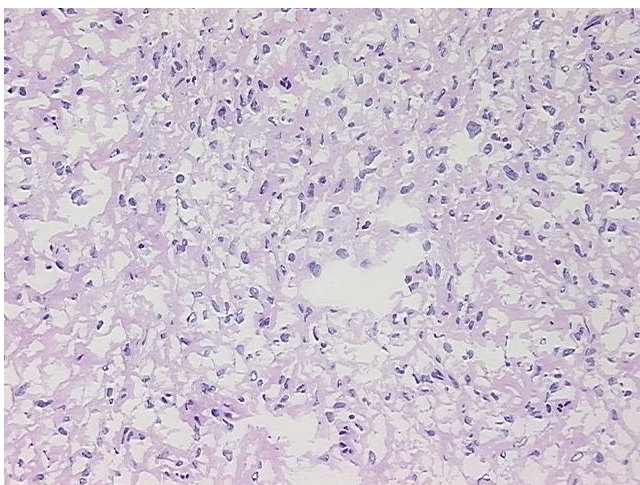


[View online »](#)

| | |
|-------------------------------------|---|
| Tumor Grade: | FIGO G3: Poorly differentiated |
| Minimum Stage Grouping: | IA |
| T (Extent of Primary Tumor): | T1a |
| N (Lymph node metastasis): | NX |
| M (Distant metastasis): | MX |
| Diagnostic Test Results: | CD3 ~ Leu4 ~ UCHT1 ! by IHC,Positive in scattered cells; BCL2 oncoprotein ! by IHC,Positive; BCL6 oncoprotein ! by IHC,Positive; CD10 ~ CALLA ~ Common ALL antigen ! by IHC,Positive; CD20 ~ B1 ~ Leu16 ! by IHC,Positive |
| Storage: | Store frozen tissue sections at -80°C. |
| Stability: | All frozen tissue sections are stable for 1 year from date of purchase if stored at -80°C without repeated freeze/thaws. |

Product images:

4x Image



20x Image