

## Product datasheet for **CS528750**

### Frozen Tissue Sections, Breast

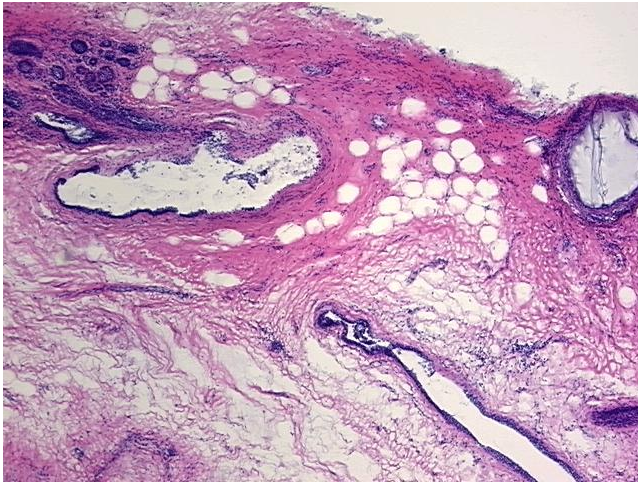
#### Product data:

|   |  |
|---|--|
| Product Type:                                     | Frozen Sections  |
| Disease State:                                    | Other Disease  |
| Diagnosis Category:                               | Fibrocystic Breast   |
| Tissue:   | Breast   |
| Frozen Sample ID:                                 | FR00030122   |
| Case ID:  | CI0000010800   |
| Tissue of Origin:                                 | Breast   |
| Site of Finding:                                  | Breast   |
| Appearance:                                       | L  |
| Sample Diagnosis (from Pathology Verification):   | Fibrocystic changes to breast  |
| Normal:   | 0%   |
| Lesional:   | 100%   |
| Tumor:  | 0%   |
| Tumor Hypo/Acellular Stroma:                      | 0%   |
| Tumor Hypercellular Stroma:                       | 0%   |
| Necrosis:   | 0%   |
| Pathology Verification notes from H&E review:     | Non Tumor Structures: 35% Glandular epithelium, 55% Stroma, 10% Adipose tissue |
| CASE Diagnosis (from medical center path report): | Adenocarcinoma of breast, ductal   |
| Age:  | 43   |
| Gender:   | Female   |
| Race:   | White or Caucasian   |

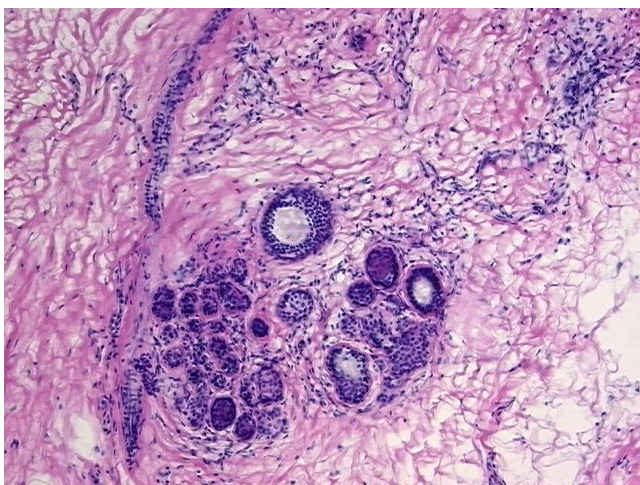


[View online »](#)

|                                     |  |
|-------------------------------------|--|
| <b>Tumor Grade:</b>                 | Nottingham G3: 8-9 points High combined grade (unfavorable)  |
| <b>Minimum Stage Grouping:</b>      | IIIA   |
| <b>T (Extent of Primary Tumor):</b> | TX   |
| <b>N (Lymph node metastasis):</b>   | N2a  |
| <b>M (Distant metastasis):</b>      | MX   |
| <b>Diagnostic Test Results:</b>     | Estrogen receptor ~ ER ! by IHC,Positive; HER2 ~ ERBB2 ~ Neu ! by IHC,Negative   |
| <b>Storage:</b>                     | Store frozen tissue sections at -80°C.   |
| <b>Stability:</b>                   | All frozen tissue sections are stable for 1 year from date of purchase if stored at -80°C without repeated freeze/thaws. |

**Product images:**

4x Image



20x Image