

Product datasheet for **CS528267**

Frozen Tissue Sections, Larynx

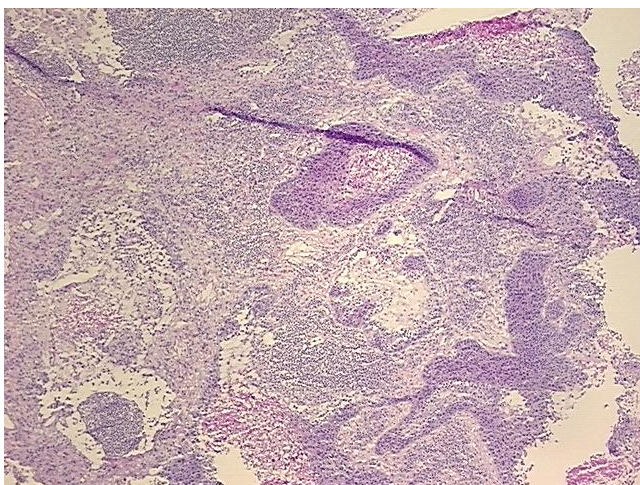
Product data:

Product Type:	Frozen Sections
Disease State:	Cancer
Diagnosis Category:	Head and Neck Cancer
Tissue:	Larynx
Frozen Sample ID:	FR0002BD7C
Case ID:	CI0000010581
Tissue of Origin:	Larynx
Site of Finding:	Lung
Appearance:	T
Sample Diagnosis (from Pathology Verification):	Carcinoma of larynx, squamous cell, metastatic
Normal:	55%
Lesional:	0%
Tumor:	15%
Tumor Hypo/Acellular Stroma:	25%
Tumor Hypercellular Stroma:	0%
Necrosis:	5%
Pathology Verification notes from H&E review:	Inflammation: Severe Lymphoplasmacytic infiltrate; Non Tumor Structures: 90% Alveoli, 10% Fibrovascular septa
CASE Diagnosis (from medical center path report):	Carcinoma of larynx, squamous cell, metastatic
Age:	81
Gender:	Male
Race:	White or Caucasian

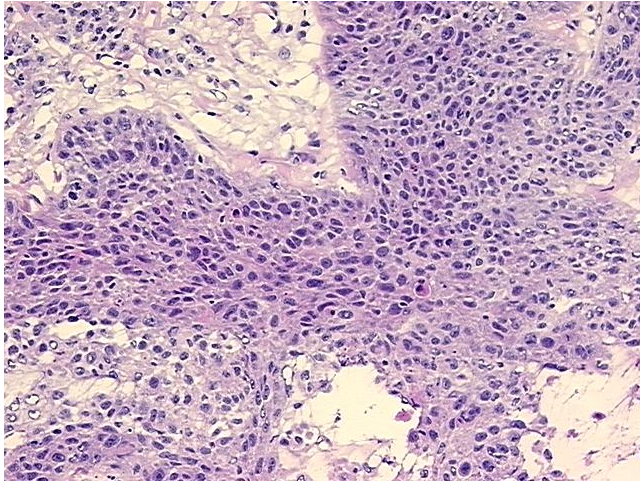


[View online »](#)

Tumor Grade:	AJCC G2: Moderately differentiated
Minimum Stage Grouping:	IV
T (Extent of Primary Tumor):	TX
N (Lymph node metastasis):	N0
M (Distant metastasis):	M1
Diagnostic Test Results:	Thyroid transcription factor 1 ~ TTF1 ! by IHC,Negative
Storage:	Store frozen tissue sections at -80°C.
Stability:	All frozen tissue sections are stable for 1 year from date of purchase if stored at -80°C without repeated freeze/thaws.

Product images:

4x Image



20x Image