

Product datasheet for **CS528204**

Frozen Tissue Sections, Colon: sigmoid

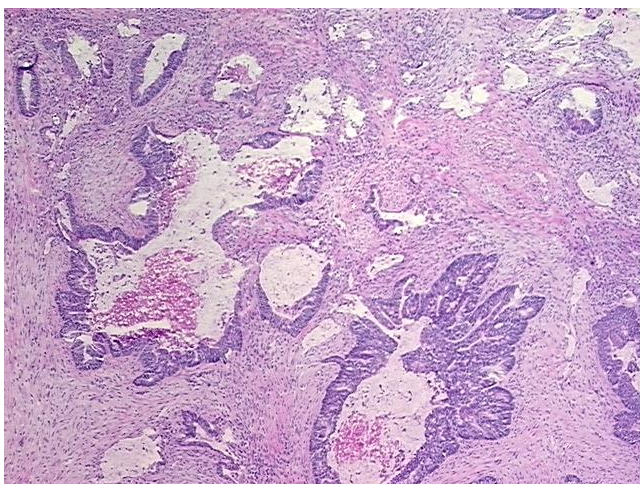
Product data:

Product Type:	Frozen Sections
Disease State:	Cancer
Diagnosis Category:	Colorectal Cancer
Tissue:	Colon
Frozen Sample ID:	FR0002D8FB
Case ID:	CI0000010438
Tissue of Origin:	Colon: sigmoid
Site of Finding:	Colon: sigmoid
Appearance:	T
Sample Diagnosis (from Pathology Verification):	Adenocarcinoma of colon
Normal:	0%
Lesional:	0%
Tumor:	45%
Tumor Hypo/Acellular Stroma:	15%
Tumor Hypercellular Stroma:	35%
Necrosis:	5%
Pathology Verification notes from H&E review:	Tumor Stroma (Cellular): Desmoplastic reaction; Tumor Stroma (Hypo/Acellular): Fibrosis, Mucin
CASE Diagnosis (from medical center path report):	Adenocarcinoma of colon
Age:	58
Gender:	Male
Race:	White or Caucasian

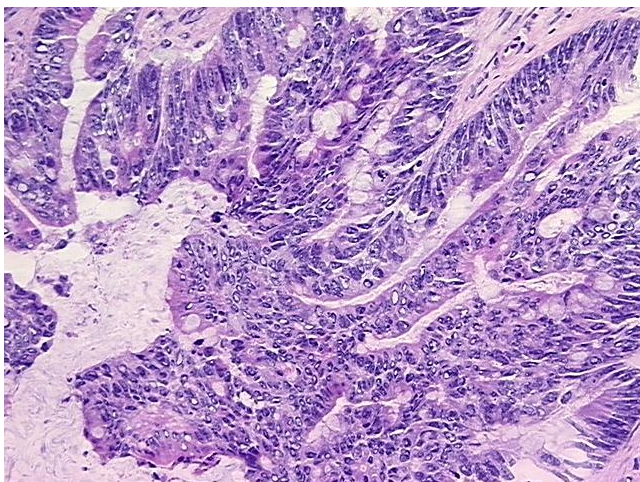


[View online »](#)

Tumor Grade:	AJCC G1: Well differentiated
Minimum Stage Grouping:	IIA
T (Extent of Primary Tumor):	T3
N (Lymph node metastasis):	N0
M (Distant metastasis):	MX
Storage:	Store frozen tissue sections at -80°C.
Stability:	All frozen tissue sections are stable for 1 year from date of purchase if stored at -80°C without repeated freeze/thaws.

Product images:

4x Image



20x Image