

Product datasheet for **CS527883**

Frozen Tissue Sections, Breast

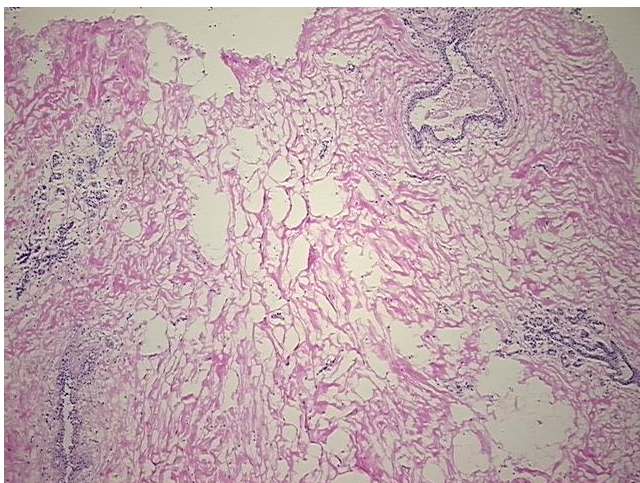
Product data:

Product Type:	Frozen Sections
Disease State:	Other Disease
Diagnosis Category:	Fibrocystic Breast
Tissue:	Breast
Frozen Sample ID:	FR0002D3D5
Case ID:	CI0000010345
Tissue of Origin:	Breast
Site of Finding:	Breast
Appearance:	L
Sample Diagnosis (from Pathology Verification):	Fibrocystic changes to breast
Normal:	0%
Lesional:	100%
Tumor:	0%
Tumor Hypo/Acellular Stroma:	0%
Tumor Hypercellular Stroma:	0%
Necrosis:	0%
Pathology Verification notes from H&E review:	Non Tumor Structures: 25% Glandular epithelium, 55% Stroma, 20% Adipose tissue
CASE Diagnosis (from medical center path report):	Carcinoma in situ of breast, ductal, cribriform
Age:	46
Gender:	Female
Race:	White or Caucasian

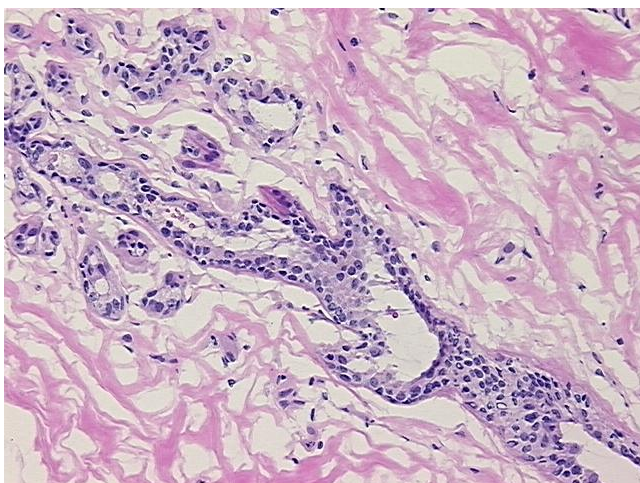


[View online »](#)

Tumor Grade:	DCIS: Intermediate grade
T (Extent of Primary Tumor):	Tis
N (Lymph node metastasis):	NX
M (Distant metastasis):	MX
Storage:	Store frozen tissue sections at -80°C.
Stability:	All frozen tissue sections are stable for 1 year from date of purchase if stored at -80°C without repeated freeze/thaws.

Product images:

4x Image



20x Image