

Product datasheet for **CS527454**

Frozen Tissue Sections, Renal pelvis

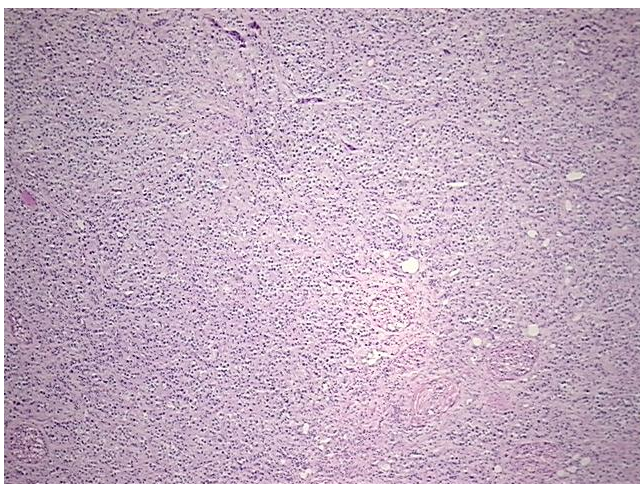
Product data:

| | |
|---|--|
| Product Type: | Frozen Sections |
| Disease State: | Cancer |
| Diagnosis Category: | Renal Pelvis Cancer |
| Tissue: | Renal pelvis |
| Frozen Sample ID: | FR5B34022D |
| Case ID: | CI0000010215 |
| Tissue of Origin: | Renal pelvis |
| Site of Finding: | Kidney |
| Appearance: | T |
| Sample Diagnosis (from Pathology Verification): | Carcinoma of renal pelvis, transitional cell |
| Normal: | 10% |
| Lesional: | 0% |
| Tumor: | 50% |
| Tumor Hypo/Acellular Stroma: | 0% |
| Tumor Hypercellular Stroma: | 30% |
| Necrosis: | 10% |
| Pathology Verification notes from H&E review: | Inflammation: Moderate Lymphoid infiltrate |
| CASE Diagnosis (from medical center path report): | Carcinoma of renal pelvis, transitional cell |
| Age: | 72 |
| Gender: | Male |
| Race: | White or Caucasian |

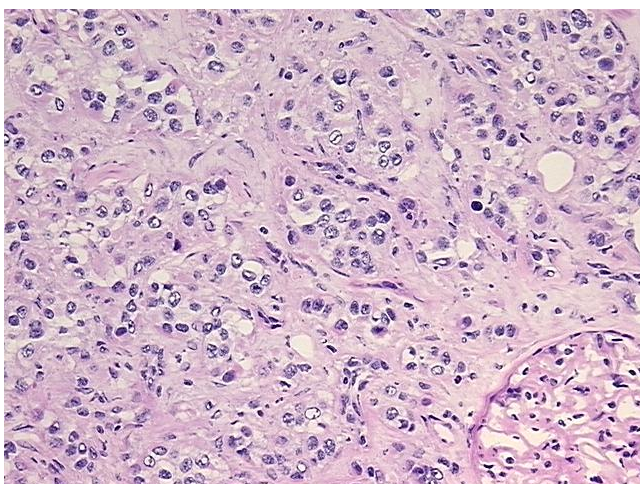


[View online »](#)

| | |
|------------------------------|--|
| Tumor Grade: | AJCC G3-4: Poorly differentiated or undifferentiated |
| Minimum Stage Grouping: | III |
| T (Extent of Primary Tumor): | T3 |
| N (Lymph node metastasis): | NX |
| M (Distant metastasis): | MX |
| Storage: | Store frozen tissue sections at -80°C. |
| Stability: | All frozen tissue sections are stable for 1 year from date of purchase if stored at -80°C without repeated freeze/thaws. |

Product images:

4x Image



20x Image