

## Product datasheet for **CS527195**

### Frozen Tissue Sections, Lung

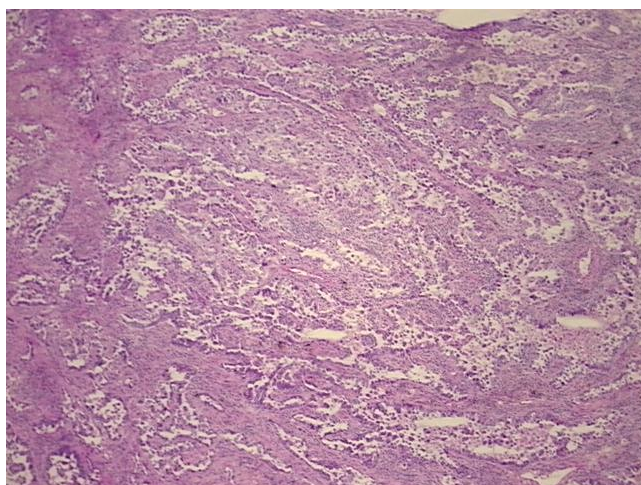
#### Product data:

Product Type:	Frozen Sections
Disease State:	Cancer
Diagnosis Category:	Lung Cancer
Tissue:	Lung
Frozen Sample ID:	FR65EE4004
Case ID:	CI0000010199
Tissue of Origin:	Lung
Site of Finding:	Lung
Appearance:	T
Sample Diagnosis (from Pathology Verification):	Adenocarcinoma of lung
Normal:	0%
Lesional:	0%
Tumor:	80%
Tumor Hypo/Acellular Stroma:	0%
Tumor Hypercellular Stroma:	10%
Necrosis:	10%
Pathology Verification notes from H&E review:	Tumor: bronchioalveolar feature with no signet ring cell morphology identified
CASE Diagnosis (from medical center path report):	Adenocarcinoma of lung
Age:	60
Gender:	Female
Race:	White or Caucasian

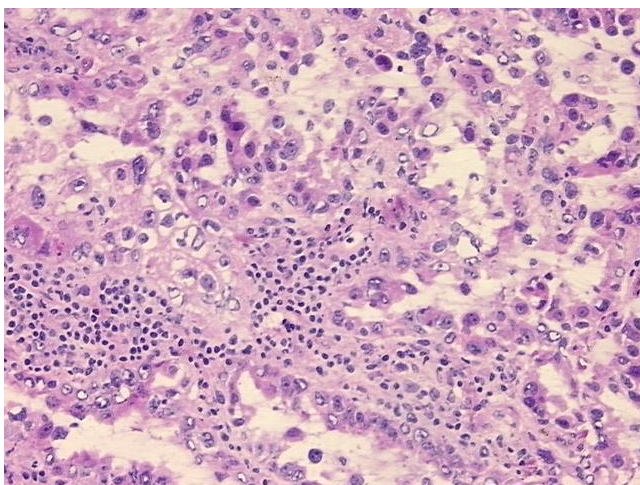


[View online »](#)

<b>Tumor Grade:</b>	AJCC G2: Moderately differentiated
<b>Minimum Stage Grouping:</b>	IIIB
<b>T (Extent of Primary Tumor):</b>	T4
<b>N (Lymph node metastasis):</b>	N1
<b>M (Distant metastasis):</b>	MX
<b>Diagnostic Test Results:</b>	GMS ~ Grocott methenamine silver stain,Negative; Reticulin stain,Positive; Acid-fast bacteria ~ AFB ~ Ziehl-Neelsen acid fast,Negative; Auramine-Rhodamine stain,Negative; Thyroid transcription factor 1 ~ TTF1 ! by IHC,Positive
<b>Storage:</b>	Store frozen tissue sections at -80°C.
<b>Stability:</b>	All frozen tissue sections are stable for 1 year from date of purchase if stored at -80°C without repeated freeze/thaws.

**Product images:**

4x Image



20x Image