

Product datasheet for CS527150

Frozen Tissue Sections, Ovary: left

Product data:

| | |
|---|--|
| Product Type: | Frozen Sections |
| Disease State: | Normal |
| Diagnosis Category: | Normal |
| Tissue: | Ovary |
| Frozen Sample ID: | FR0002CD79 |
| Case ID: | CI0000010189 |
| Tissue of Origin: | Ovary: left |
| Site of Finding: | Ovary: left |
| Appearance: | R |
| Sample Diagnosis (from Pathology Verification): | Within normal limits |
| Normal: | 100% |
| Lesional: | 0% |
| Tumor: | 0% |
| Tumor Hypo/Acellular Stroma: | 0% |
| Tumor Hypercellular Stroma: | 0% |
| Necrosis: | 0% |
| Pathology Verification notes from H&E review: | Non Tumor Structures: 20% Ovarian stroma, 10% Hilar vessels, 70% Corpus luteum |
| CASE Diagnosis (from medical center path report): | Cyst of ovary, endometrial |
| Age: | 42 |
| Gender: | Female |
| Race: | White or Caucasian |

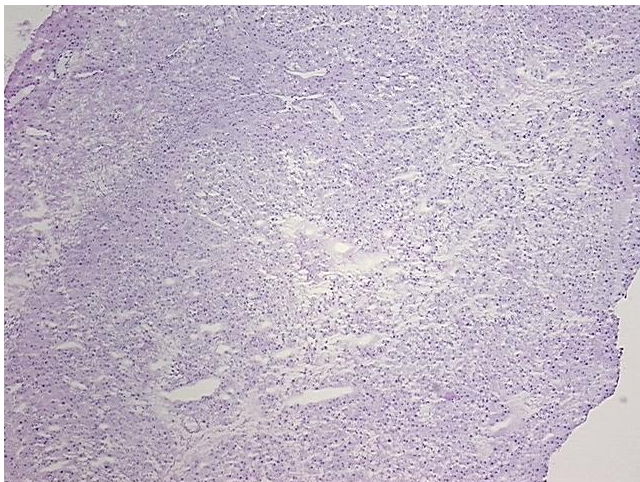


[View online »](#)

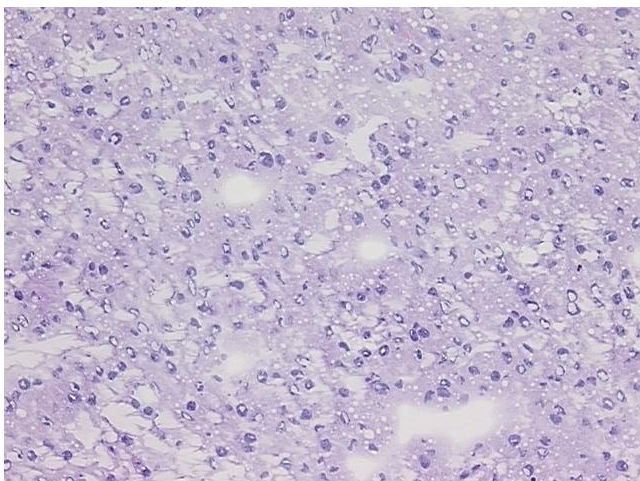
Storage: Store frozen tissue sections at -80°C.

Stability: All frozen tissue sections are stable for 1 year from date of purchase if stored at -80°C without repeated freeze/thaws.

Product images:



4x Image



20x Image