

Product datasheet for **CS526847**

Frozen Tissue Sections, Ovary: left

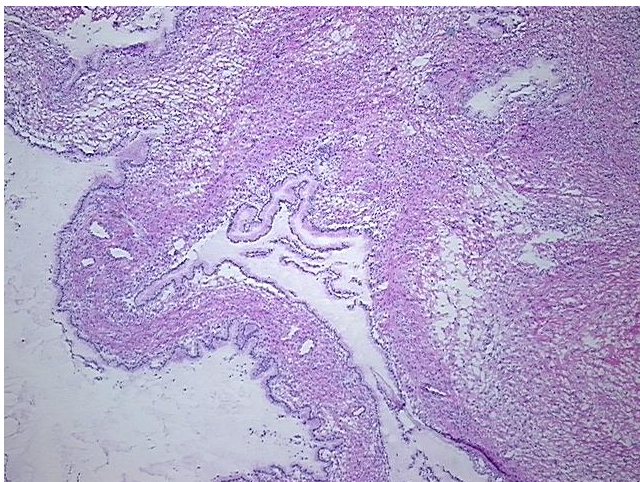
Product data:

| | |
|---|---|
| Product Type: | Frozen Sections |
| Disease State: | Other Disease |
| Diagnosis Category: | Benign Tumors |
| Tissue: | Ovary |
| Frozen Sample ID: | FR0002C849 |
| Case ID: | CI0000010107 |
| Tissue of Origin: | Ovary: left |
| Site of Finding: | Ovary: left |
| Appearance: | T |
| Sample Diagnosis (from Pathology Verification): | Cystadenoma of ovary, mucinous |
| Normal: | 55% |
| Lesional: | 0% |
| Tumor: | 40% |
| Tumor Hypo/Acellular Stroma: | 0% |
| Tumor Hypercellular Stroma: | 5% |
| Necrosis: | 0% |
| Pathology Verification notes from H&E review: | Non Tumor Structures: 100% Ovarian stroma |
| CASE Diagnosis (from medical center path report): | Cystadenoma of ovary, mucinous |
| Age: | 28 |
| Gender: | Female |
| Race: | Not reported |

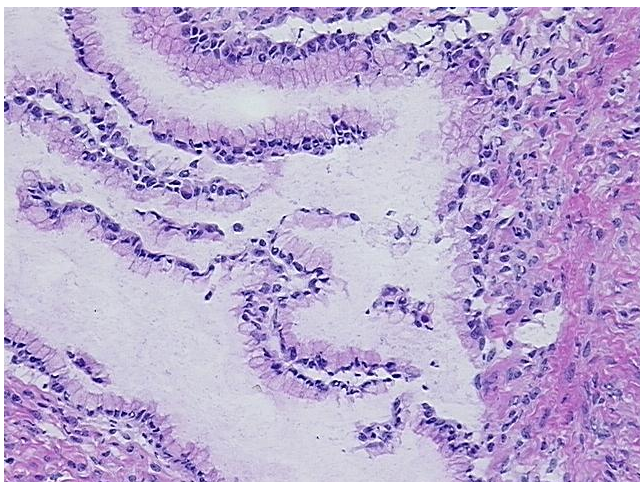


[View online »](#)

| | |
|------------------------------|--|
| Tumor Grade: | Not Reported |
| Minimum Stage Grouping: | Not Reported |
| T (Extent of Primary Tumor): | Not Reported |
| N (Lymph node metastasis): | Not Reported |
| M (Distant metastasis): | Not Reported |
| Storage: | Store frozen tissue sections at -80°C. |
| Stability: | All frozen tissue sections are stable for 1 year from date of purchase if stored at -80°C without repeated freeze/thaws. |

Product images:

4x Image



20x Image