

Product datasheet for CS526721

Frozen Tissue Sections, Ovary: right

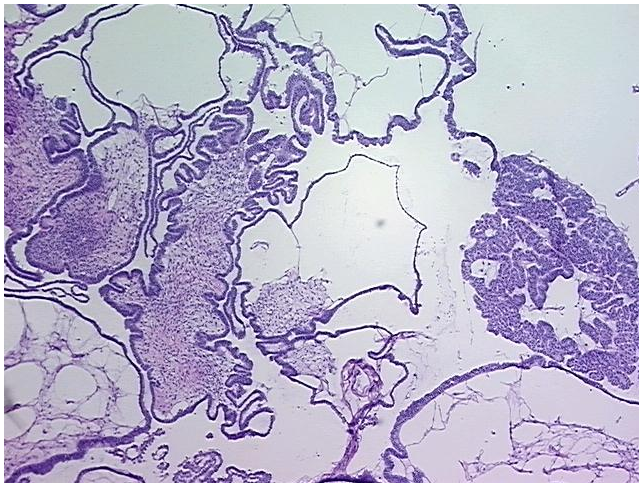
Product data:

Product Type:	Frozen Sections
Disease State:	Other Disease
Diagnosis Category:	Borderline Ovarian Tumor
Tissue:	Ovary
Frozen Sample ID:	FR000294D3
Case ID:	CI0000010068
Tissue of Origin:	Ovary: right
Site of Finding:	Ovary: right
Appearance:	T
Sample Diagnosis (from Pathology Verification):	Tumor of ovary, serous, borderline
Normal:	0%
Lesional:	0%
Tumor:	70%
Tumor Hypo/Acellular Stroma:	20%
Tumor Hypercellular Stroma:	10%
Necrosis:	0%
Pathology Verification notes from H&E review:	Tumor Stroma (Cellular): Desmoplastic reaction; Tumor Stroma (Hypo/Acellular): Stromal edema
CASE Diagnosis (from medical center path report):	Tumor of ovary, serous, borderline
Age:	44
Gender:	Female
Race:	Black or African American

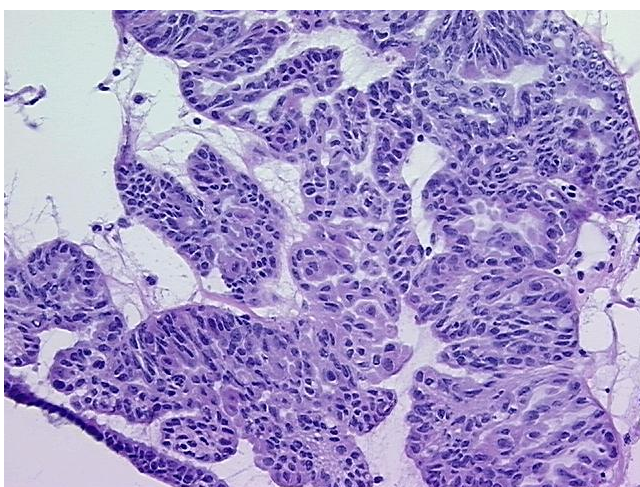


[View online »](#)

Tumor Grade:	AJCC GB: Borderline malignancy
Minimum Stage Grouping:	IIIB
T (Extent of Primary Tumor):	T3b
N (Lymph node metastasis):	N0
M (Distant metastasis):	MX
Diagnostic Test Results:	Epithelial specific antigen ~ BerEP4 ~ MOC31 ! by IHC,Positive; CA125 ~ Ovarian Cancer Antigen,Positive; Calretinin,Positive
Storage:	Store frozen tissue sections at -80°C.
Stability:	All frozen tissue sections are stable for 1 year from date of purchase if stored at -80°C without repeated freeze/thaws.

Product images:

4x Image



20x Image