

Product datasheet for **CS526719**

Frozen Tissue Sections, Ovary: right

Product data:

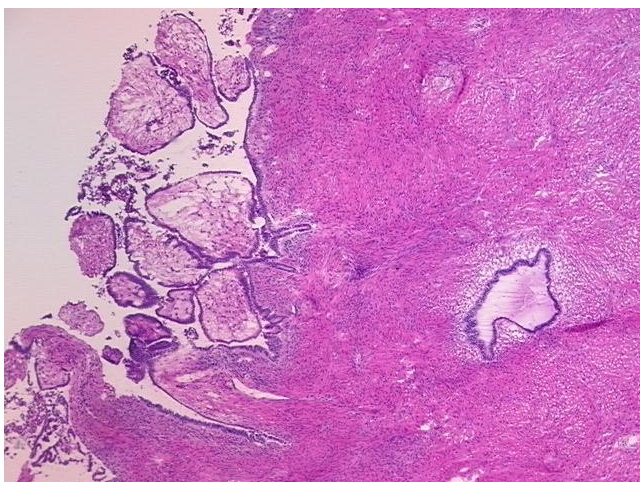
| | |
|---|------------------------------------|
| Product Type: | Frozen Sections |
| Disease State: | Other Disease |
| Diagnosis Category: | Borderline Ovarian Tumor |
| Tissue: | Ovary |
| Frozen Sample ID: | FR000294CD |
| Case ID: | CI0000010068 |
| Tissue of Origin: | Ovary: right |
| Site of Finding: | Ovary: right |
| Appearance: | T |
| Sample Diagnosis (from Pathology Verification): | Tumor of ovary, serous, borderline |
| Normal: | 0% |
| Lesional: | 0% |
| Tumor: | 35% |
| Tumor Hypo/Acellular Stroma: | 0% |
| Tumor Hypercellular Stroma: | 65% |
| Necrosis: | 0% |
| Pathology Verification notes from H&E review: | stroma: fibroblasts |
| CASE Diagnosis (from medical center path report): | Tumor of ovary, serous, borderline |
| Age: | 44 |
| Gender: | Female |
| Race: | Black or African American |



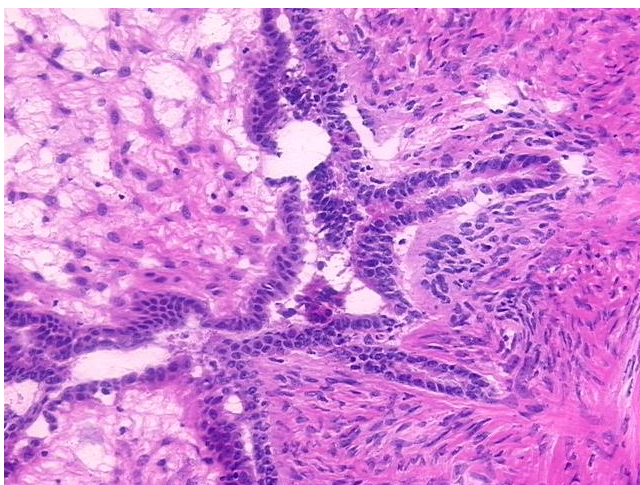
[View online »](#)

| | |
|-------------------------------------|--|
| Tumor Grade: | AJCC GB: Borderline malignancy |
| Minimum Stage Grouping: | IIIB |
| T (Extent of Primary Tumor): | T3b |
| N (Lymph node metastasis): | N0 |
| M (Distant metastasis): | MX |
| Diagnostic Test Results: | Epithelial specific antigen ~ BerEP4 ~ MOC31 ! by IHC,Positive; CA125 ~ Ovarian Cancer Antigen,Positive; Calretinin,Positive |
| Storage: | Store frozen tissue sections at -80°C. |
| Stability: | All frozen tissue sections are stable for 1 year from date of purchase if stored at -80°C without repeated freeze/thaws. |

Product images:



4x Image



20x Image