

Product datasheet for **CS526684**

Frozen Tissue Sections, Gallbladder

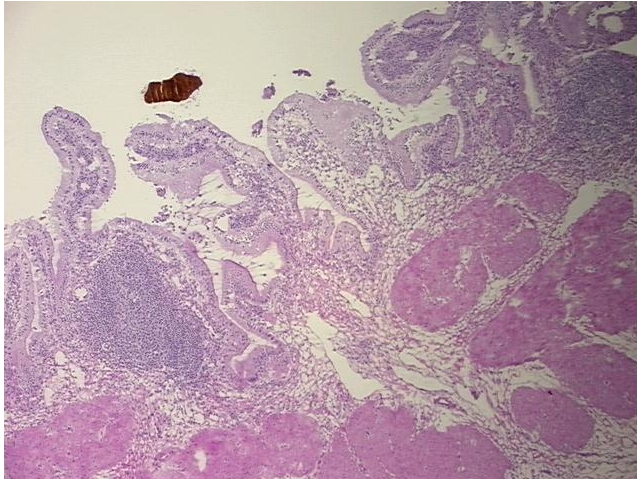
Product data:

Product Type:	Frozen Sections
Disease State:	Other Disease
Diagnosis Category:	Gallbladder Disease
Tissue:	Gallbladder
Frozen Sample ID:	FR0002940D
Case ID:	CI0000010051
Tissue of Origin:	Gallbladder
Site of Finding:	Gallbladder
Appearance:	L
Sample Diagnosis (from Pathology Verification):	Cholecystitis, chronic
Normal:	0%
Lesional:	100%
Tumor:	0%
Tumor Hypo/Acellular Stroma:	0%
Tumor Hypercellular Stroma:	0%
Necrosis:	0%
Pathology Verification notes from H&E review:	Inflammation: Moderate Lymphoid infiltrate; Non Tumor Structures: 20% Mucosa, 40% Muscle, 40% Adventitia
Age:	80
Gender:	Female
Race:	White or Caucasian
Storage:	Store frozen tissue sections at -80°C.
Stability:	All frozen tissue sections are stable for 1 year from date of purchase if stored at -80°C without repeated freeze/thaws.

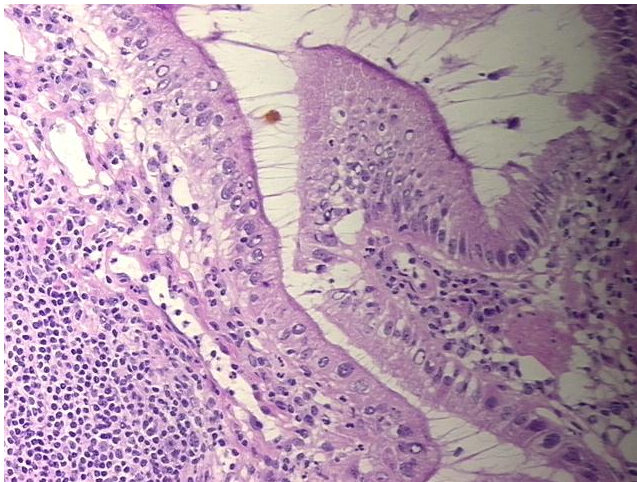


[View online »](#)

Product images:



4x Image



20x Image