

Product datasheet for **CS526119**

Frozen Tissue Sections, Spleen

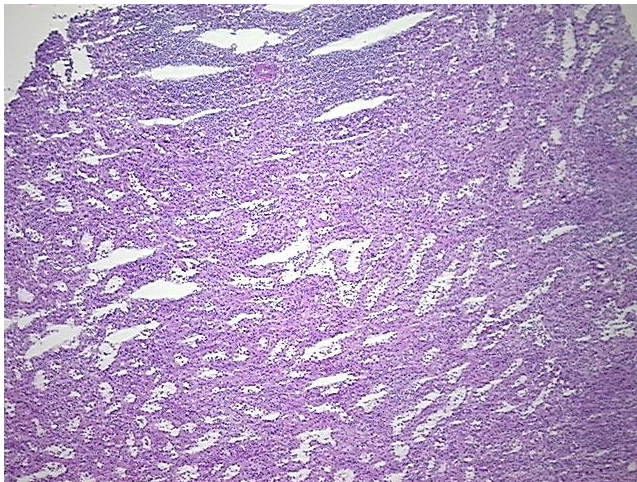
Product data:

| | |
|---|--|
| Product Type: | Frozen Sections |
| Disease State: | Normal |
| Diagnosis Category: | Normal |
| Tissue: | Spleen |
| Frozen Sample ID: | FR5B33B875 |
| Case ID: | CI0000009903 |
| Tissue of Origin: | Spleen |
| Site of Finding: | Spleen |
| Appearance: | R |
| Sample Diagnosis (from Pathology Verification): | Within normal limits |
| Normal: | 100% |
| Lesional: | 0% |
| Tumor: | 0% |
| Tumor Hypo/Acellular Stroma: | 0% |
| Tumor Hypercellular Stroma: | 0% |
| Necrosis: | 0% |
| Pathology Verification notes from H&E review: | Non Tumor Structures: 70% Red pulp, 30% White pulp |
| CASE Diagnosis (from medical center path report): | Lymphoma, large B-cell, diffuse |
| Age: | 29 |
| Gender: | Male |
| Race: | Black or African American |

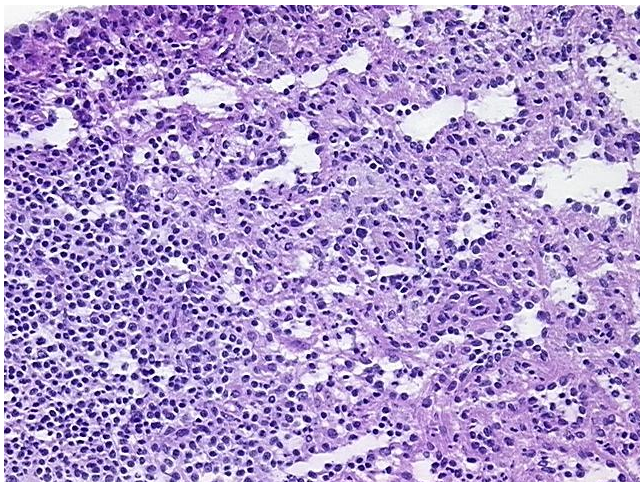


[View online »](#)

| | |
|-------------------------------------|---|
| Tumor Grade: | Not Reported |
| Minimum Stage Grouping: | IV |
| T (Extent of Primary Tumor): | Not applicable |
| N (Lymph node metastasis): | Not applicable |
| M (Distant metastasis): | Not applicable |
| Diagnostic Test Results: | CD3 ~ Leu4 ~ UCHT1 ! by IHC,Negative; Kappa light chain ! by FC,Positive, polyclonal; Lambda light chain ! by FC,Positive, polyclonal; CD19 ~ B4 ~ Leu12 ! by IHC,Positive; CD20 ~ B1 ~ Leu16 ! by IHC,Positive |
| Storage: | Store frozen tissue sections at -80°C. |
| Stability: | All frozen tissue sections are stable for 1 year from date of purchase if stored at -80°C without repeated freeze/thaws. |

Product images:


4x Image



20x Image