

Product datasheet for CS526005

Frozen Tissue Sections, Liver

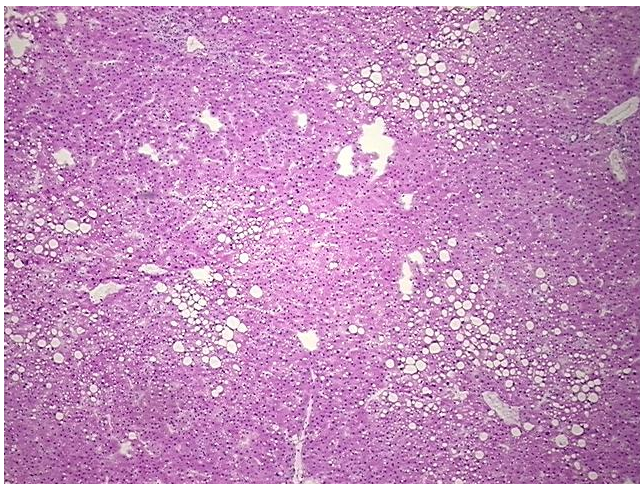
Product data:

| | |
|---|--|
| Product Type: | Frozen Sections |
| Disease State: | Other Disease |
| Diagnosis Category: | Fatty Changes To Liver |
| Tissue: | Liver |
| Frozen Sample ID: | FR00029B66 |
| Case ID: | CI0000009863 |
| Tissue of Origin: | Liver |
| Site of Finding: | Liver |
| Appearance: | L |
| Sample Diagnosis (from Pathology Verification): | Fatty changes to liver |
| Normal: | 0% |
| Lesional: | 100% |
| Tumor: | 0% |
| Tumor Hypo/Acellular Stroma: | 0% |
| Tumor Hypercellular Stroma: | 0% |
| Necrosis: | 0% |
| Pathology Verification notes from H&E review: | No normal architecture in lesional component |
| CASE Diagnosis (from medical center path report): | Adenocarcinoma of colon, metastatic |
| Age: | 68 |
| Gender: | Male |
| Race: | Native Hawaiian or other Pacific Islander |

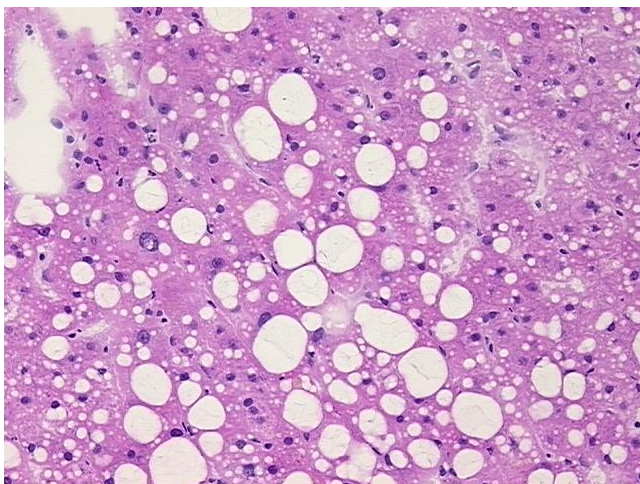


[View online »](#)

| | |
|------------------------------|--|
| Tumor Grade: | AJCC G2: Moderately differentiated |
| Minimum Stage Grouping: | IV |
| T (Extent of Primary Tumor): | TX |
| N (Lymph node metastasis): | NX |
| M (Distant metastasis): | M1 |
| Storage: | Store frozen tissue sections at -80°C. |
| Stability: | All frozen tissue sections are stable for 1 year from date of purchase if stored at -80°C without repeated freeze/thaws. |

Product images:

4x Image



20x Image