

## Product datasheet for **CS525557**

### Frozen Tissue Sections, Ovary: right

#### Product data:

|   |   |
|---|---|
| Product Type:                                     | Frozen Sections                             |
| Disease State:                                    | Other Disease                               |
| Diagnosis Category:                               | Atrophy                                     |
| Tissue:   | Ovary                                       |
| Frozen Sample ID:                                 | FR00029258                                  |
| Case ID:  | CI0000009774                                |
| Tissue of Origin:                                 | Ovary: right                                |
| Site of Finding:                                  | Ovary: right                                |
| Appearance:                                       | L   |
| Sample Diagnosis (from Pathology Verification):   | Atrophy of tissue                           |
| Normal:   | 0%  |
| Lesional:   | 100%  |
| Tumor:  | 0%  |
| Tumor Hypo/Acellular Stroma:                      | 0%  |
| Tumor Hypercellular Stroma:                       | 0%  |
| Necrosis:   | 0%  |
| Pathology Verification notes from H&E review:     | 85% ovarian stroma , 15% hyalinized vessels |
| CASE Diagnosis (from medical center path report): | Endometriosis                               |
| Age:  | 45  |
| Gender:   | Female                                      |
| Race:   | White or Caucasian                          |

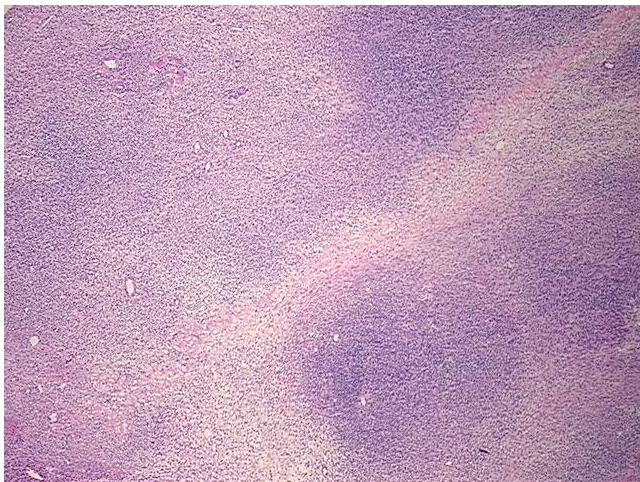


[View online »](#)

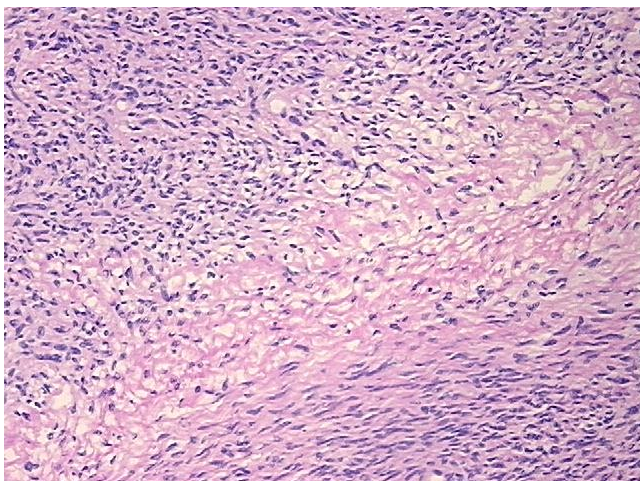
**Storage:** Store frozen tissue sections at -80°C.

**Stability:** All frozen tissue sections are stable for 1 year from date of purchase if stored at -80°C without repeated freeze/thaws.

**Product images:**



4x Image



20x Image