

## Product datasheet for CS525399

### Frozen Tissue Sections, Cervix

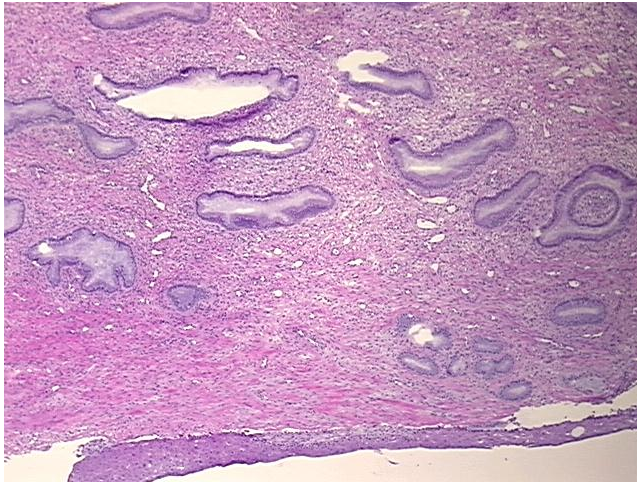
#### Product data:

Product Type:	Frozen Sections
Disease State:	Normal
Diagnosis Category:	Normal
Tissue:	Cervix
Frozen Sample ID:	FR0002782F
Case ID:	CI0000009758
Tissue of Origin:	Cervix
Site of Finding:	Cervix
Appearance:	R
Sample Diagnosis (from Pathology Verification):	Within normal limits
Normal:	100%
Lesional:	0%
Tumor:	0%
Tumor Hypo/Acellular Stroma:	0%
Tumor Hypercellular Stroma:	0%
Necrosis:	0%
Pathology Verification notes from H&E review:	Non Tumor Structures: 10% Squamous epithelium, 20% Glandular epithelium, 70% Fibromuscular stroma; Other Features/Comments: Transformation Zone absent
CASE Diagnosis (from medical center path report):	Leiomyoma of myometrium
Age:	49
Gender:	Female
Race:	White or Caucasian

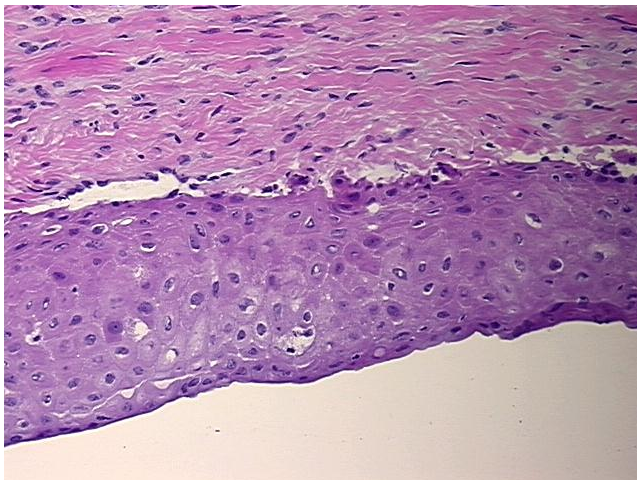


[View online »](#)

Tumor Grade:	Not Reported
Minimum Stage Grouping:	Not Reported
T (Extent of Primary Tumor):	Not Reported
N (Lymph node metastasis):	Not Reported
M (Distant metastasis):	Not Reported
Storage:	Store frozen tissue sections at -80°C.
Stability:	All frozen tissue sections are stable for 1 year from date of purchase if stored at -80°C without repeated freeze/thaws.

**Product images:**

4x Image



20x Image