

Product datasheet for CS524447

Frozen Tissue Sections, Uterus

Product data:

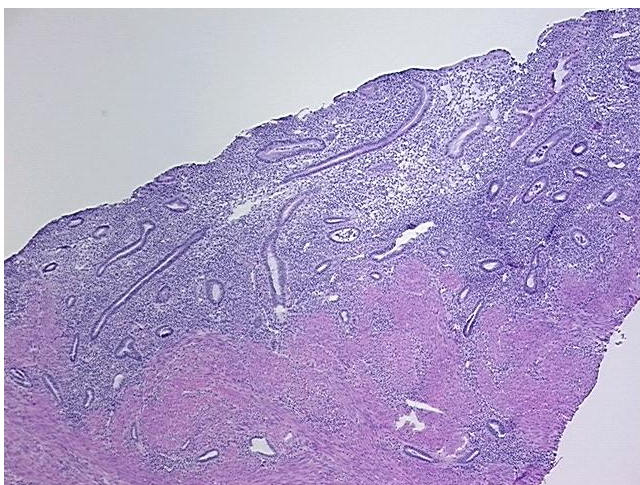
Product Type:	Frozen Sections
Disease State:	Normal
Diagnosis Category:	Normal
Tissue:	Uterus
Frozen Sample ID:	FR0002F33E
Case ID:	CI0000009530
Tissue of Origin:	Uterus
Site of Finding:	Uterus
Appearance:	R
Sample Diagnosis (from Pathology Verification):	Within normal limits
Normal:	100%
Lesional:	0%
Tumor:	0%
Tumor Hypo/Acellular Stroma:	0%
Tumor Hypercellular Stroma:	0%
Necrosis:	0%
Pathology Verification notes from H&E review:	Non Tumor Structures: 10% Glands, 15% Stroma, 75% Myometrium; Other Features/Comments: Inactive endometrium
CASE Diagnosis (from medical center path report):	Carcinoma of cervix, squamous cell, large cell, non-keratinizing
Age:	48
Gender:	Female
Race:	White or Caucasian



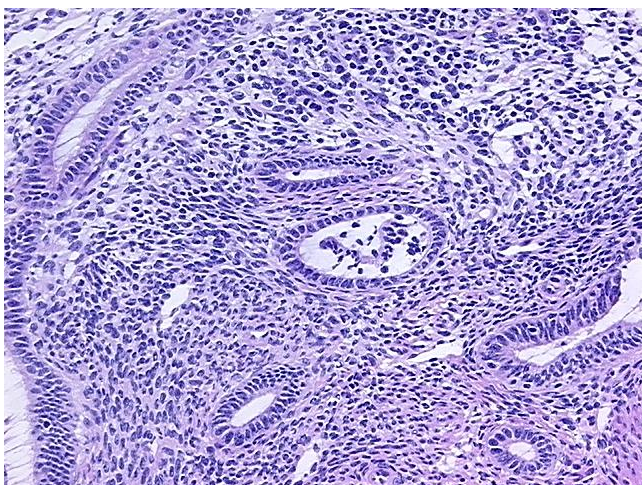
[View online »](#)

Tumor Grade:	Not Reported
Minimum Stage Grouping:	IB1
T (Extent of Primary Tumor):	T1b1
N (Lymph node metastasis):	N0
M (Distant metastasis):	MX
Diagnostic Test Results:	Epithelial specific antigen ~ BerEP4 ~ MOC31 ! by IHC,Positive; Calretinin,Negative
Storage:	Store frozen tissue sections at -80°C.
Stability:	All frozen tissue sections are stable for 1 year from date of purchase if stored at -80°C without repeated freeze/thaws.

Product images:



4x Image



20x Image