

## Product datasheet for **CS524010**

### Frozen Tissue Sections, Breast

#### Product data:

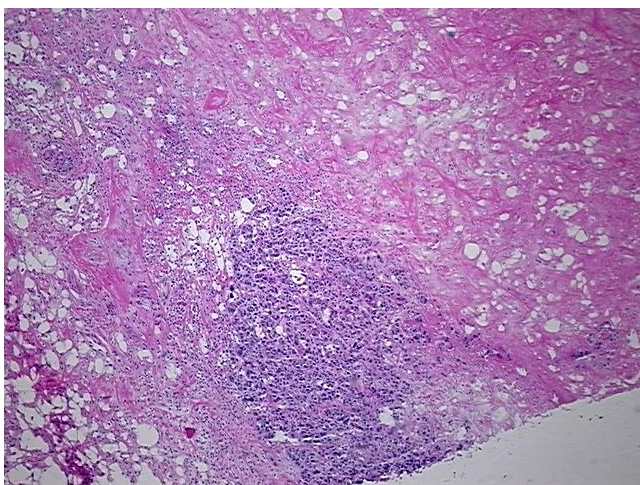
Product Type:	Frozen Sections
Disease State:	Cancer
Diagnosis Category:	Breast Cancer
Tissue:	Breast
Frozen Sample ID:	FR0002BFFB
Case ID:	CI0000009280
Tissue of Origin:	Breast
Site of Finding:	Breast
Appearance:	T
Sample Diagnosis (from Pathology Verification):	Adenocarcinoma of breast, ductal, recurrent
Normal:	0%
Lesional:	0%
Tumor:	20%
Tumor Hypo/Acellular Stroma:	0%
Tumor Hypercellular Stroma:	65%
Necrosis:	15%
Pathology Verification notes from H&E review:	Tumor Stroma (Cellular): Fibroblastic cells, Inflammatory cells
CASE Diagnosis (from medical center path report):	Adenocarcinoma of breast, ductal, recurrent
Age:	53
Gender:	Female
Race:	White or Caucasian



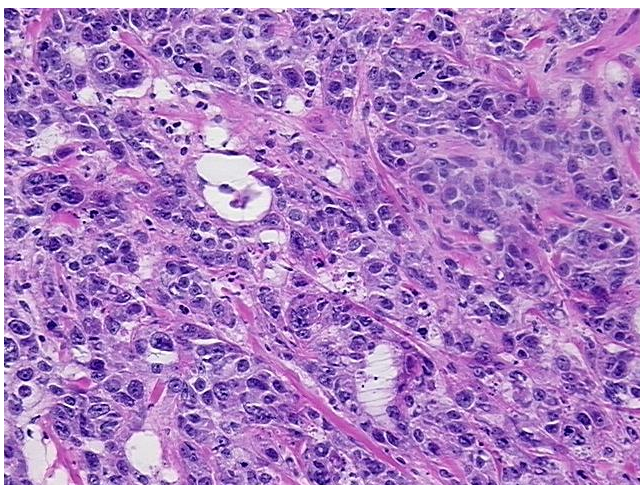
[View online »](#)

<b>Tumor Grade:</b>	Nottingham G3: 8-9 points High combined grade (unfavorable)
<b>Minimum Stage Grouping:</b>	I
<b>T (Extent of Primary Tumor):</b>	T1c
<b>N (Lymph node metastasis):</b>	NX
<b>M (Distant metastasis):</b>	MX
<b>Diagnostic Test Results:</b>	Progesterone receptor ~ PR ! by IHC,Negative; Estrogen receptor ~ ER ! by IHC,Negative; HER2 ~ ERBB2 ~ Neu ! by IHC,Negative
<b>Storage:</b>	Store frozen tissue sections at -80°C.
<b>Stability:</b>	All frozen tissue sections are stable for 1 year from date of purchase if stored at -80°C without repeated freeze/thaws.

### Product images:



4x Image



20x Image