

Product datasheet for **CS523573**

Frozen Tissue Sections, Ovary: left

Product data:

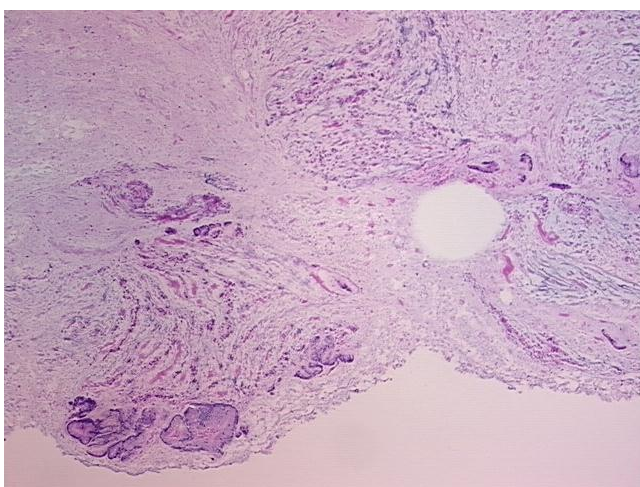
| | |
|---|--------------------------------------|
| Product Type: | Frozen Sections |
| Disease State: | Other Disease |
| Diagnosis Category: | Borderline Ovarian Tumor |
| Tissue: | Ovary |
| Frozen Sample ID: | FR00022CF4 |
| Case ID: | CI0000009052 |
| Tissue of Origin: | Ovary: left |
| Site of Finding: | Ovary: left |
| Appearance: | T |
| Sample Diagnosis (from Pathology Verification): | Tumor of ovary, mucinous, borderline |
| Normal: | 0% |
| Lesional: | 0% |
| Tumor: | 20% |
| Tumor Hypo/Acellular Stroma: | 80% |
| Tumor Hypercellular Stroma: | 0% |
| Necrosis: | 0% |
| CASE Diagnosis (from medical center path report): | Tumor of ovary, mucinous, borderline |
| Age: | 61 |
| Gender: | Female |
| Race: | White or Caucasian |
| Tumor Grade: | AJCC GB: Borderline malignancy |



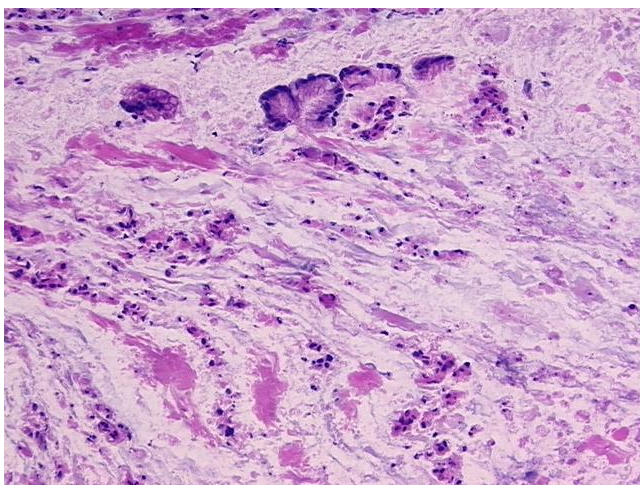
[View online »](#)

| | |
|------------------------------|--|
| Minimum Stage Grouping: | IA |
| T (Extent of Primary Tumor): | T1a |
| N (Lymph node metastasis): | N0 |
| M (Distant metastasis): | MX |
| Storage: | Store frozen tissue sections at -80°C. |
| Stability: | All frozen tissue sections are stable for 1 year from date of purchase if stored at -80°C without repeated freeze/thaws. |

Product images:



4x Image



20x Image