

## Product datasheet for **CS523280**

### Frozen Tissue Sections, Bone: femur, head

#### Product data:

Product Type:	Frozen Sections
Disease State:	Other Disease
Diagnosis Category:	Arthritis
Tissue:	Bone
Frozen Sample ID:	FR65EE2EDE
Case ID:	CI0000009006
Tissue of Origin:	Bone: femur, head
Site of Finding:	Bone: femur, head
Appearance:	L
Sample Diagnosis (from Pathology Verification):	Osteoarthritis
Normal:	80%
Lesional:	20%
Tumor:	0%
Tumor Hypo/Acellular Stroma:	0%
Tumor Hypercellular Stroma:	0%
Necrosis:	0%
Pathology Verification notes from H&E review:	20% chondrocytes, 50% chondroid matrix, 20% bone, 10% marrow
CASE Diagnosis (from medical center path report):	Osteoarthritis
Age:	46
Gender:	Male
Race:	White or Caucasian

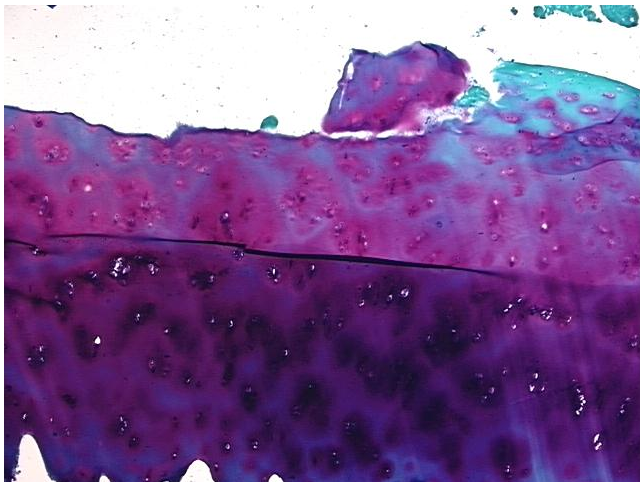


[View online »](#)

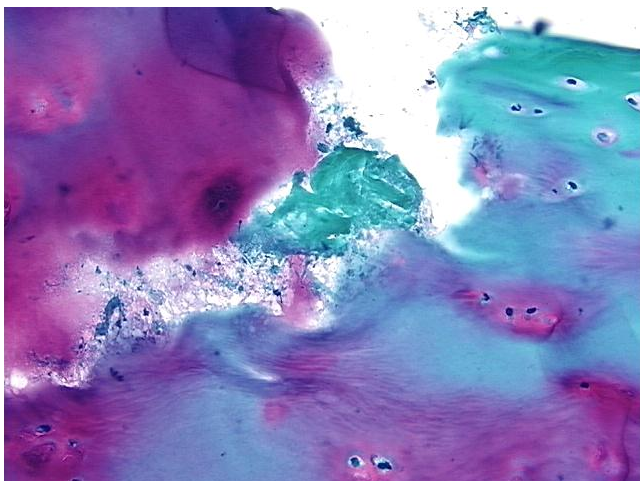
**Storage:** Store frozen tissue sections at -80°C.

**Stability:** All frozen tissue sections are stable for 1 year from date of purchase if stored at -80°C without repeated freeze/thaws.

**Product images:**



4x Image



20x Image