

Product datasheet for **CS523277**

Frozen Tissue Sections, Bone: femur, head

Product data:

Product Type:	Frozen Sections
Disease State:	Normal
Diagnosis Category:	Normal
Tissue:	Bone
Frozen Sample ID:	FR5B33F93F
Case ID:	CI0000009006
Tissue of Origin:	Bone: femur, head
Site of Finding:	Bone: femur, head
Appearance:	R
Sample Diagnosis (from Pathology Verification):	Within normal limits
Normal:	100%
Lesional:	0%
Tumor:	0%
Tumor Hypo/Acellular Stroma:	0%
Tumor Hypercellular Stroma:	0%
Necrosis:	0%
Pathology Verification notes from H&E review:	25% chondrocytes, 75% matrix
CASE Diagnosis (from medical center path report):	Osteoarthritis
Age:	46
Gender:	Male
Race:	White or Caucasian

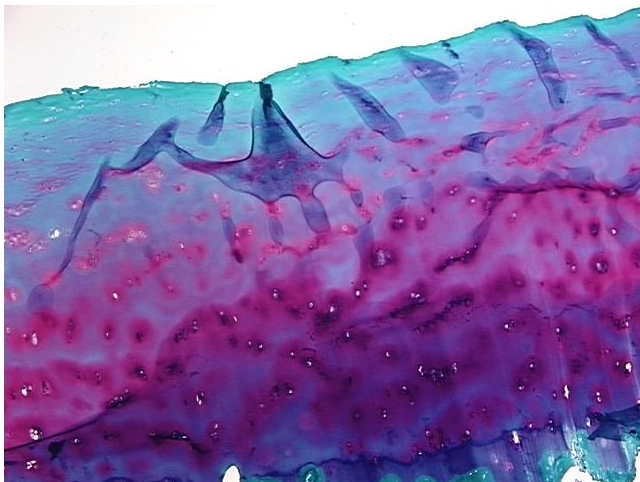


[View online »](#)

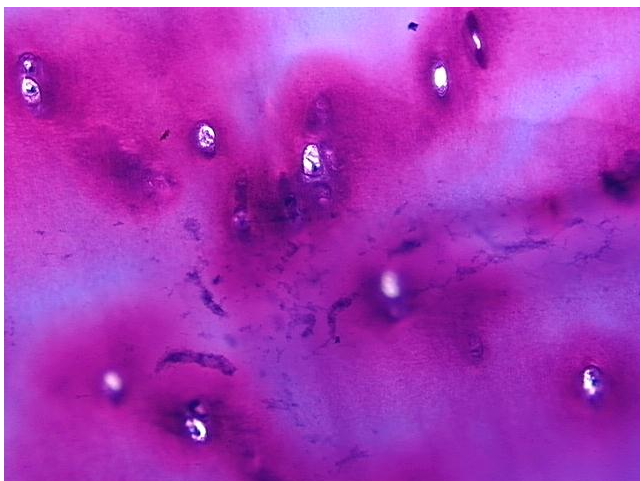
Storage: Store frozen tissue sections at -80°C.

Stability: All frozen tissue sections are stable for 1 year from date of purchase if stored at -80°C without repeated freeze/thaws.

Product images:



4x Image



20x Image