

## Product datasheet for CS523205

### Frozen Tissue Sections, Cartilage

#### Product data:

|   |                              |
|---|------------------------------|
| Product Type:                                     | Frozen Sections              |
| Disease State:                                    | Other Disease                |
| Diagnosis Category:                               | Arthritis                    |
| Tissue:   | Cartilage                    |
| Frozen Sample ID:                                 | FR00022E3E                   |
| Case ID:  | CI0000008986                 |
| Tissue of Origin:                                 | Cartilage                    |
| Site of Finding:                                  | Cartilage                    |
| Appearance:                                       | L                            |
| Sample Diagnosis (from Pathology Verification):   | Osteoarthritis               |
| Normal:   | 0%                           |
| Lesional:   | 100%                         |
| Tumor:  | 0%                           |
| Tumor Hypo/Acellular Stroma:                      | 0%                           |
| Tumor Hypercellular Stroma:                       | 0%                           |
| Necrosis:   | 0%                           |
| Pathology Verification notes from H&E review:     | 30% chondrocytes, 70% matrix |
| CASE Diagnosis (from medical center path report): | Osteoarthritis               |
| Age:  | 78                           |
| Gender:   | Male                         |
| Race:   | White or Caucasian           |

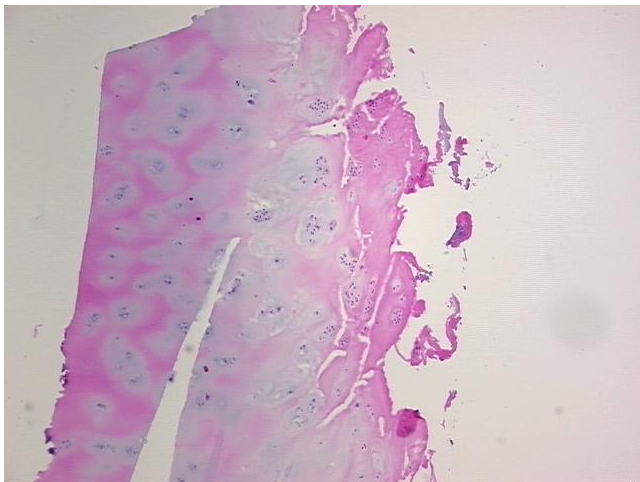


[View online »](#)

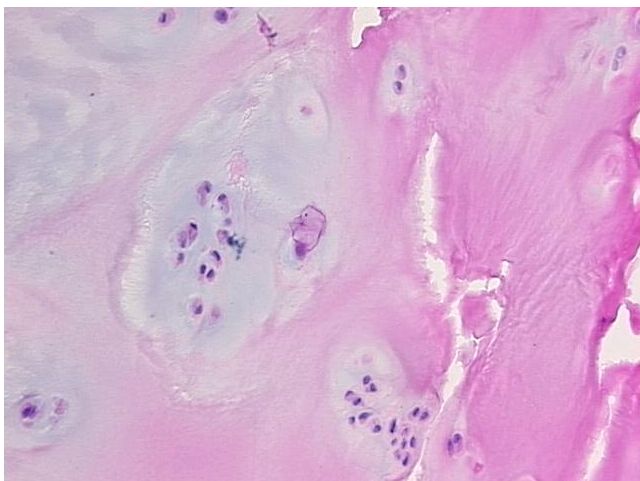
**Storage:** Store frozen tissue sections at -80°C.

**Stability:** All frozen tissue sections are stable for 1 year from date of purchase if stored at -80°C without repeated freeze/thaws.

**Product images:**



4x Image



20x Image