

Product datasheet for **CS523069**

Frozen Tissue Sections, Breast

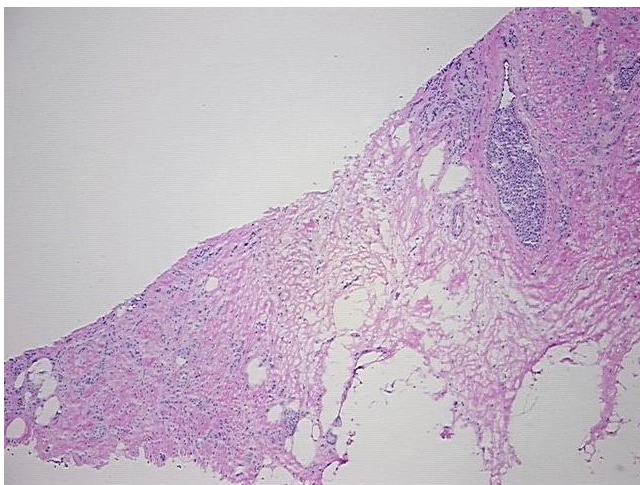
Product data:

Product Type:	Frozen Sections
Disease State:	Cancer
Diagnosis Category:	Breast Cancer
Tissue:	Breast
Frozen Sample ID:	FR000228BB
Case ID:	CI0000008950
Tissue of Origin:	Breast
Site of Finding:	Breast
Appearance:	T
Sample Diagnosis (from Pathology Verification):	Adenocarcinoma of breast, ductal
Normal:	30%
Lesional:	0%
Tumor:	25%
Tumor Hypo/Acellular Stroma:	25%
Tumor Hypercellular Stroma:	20%
Necrosis:	0%
CASE Diagnosis (from medical center path report):	Adenocarcinoma of breast, ductal
Age:	63
Gender:	Female
Race:	White or Caucasian
Tumor Grade:	Nottingham G3: 8-9 points High combined grade (unfavorable)

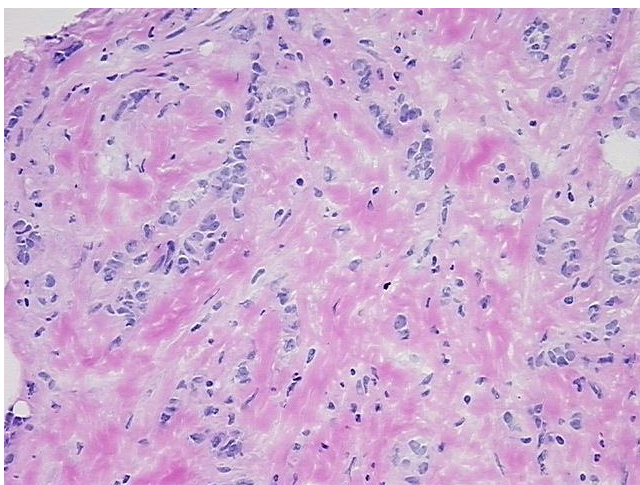


[View online »](#)

Minimum Stage Grouping:	IIA
T (Extent of Primary Tumor):	T2
N (Lymph node metastasis):	N0
M (Distant metastasis):	MX
Diagnostic Test Results:	Progesterone receptor ~ PR ! by IHC,Positive; Estrogen receptor ~ ER ! by IHC,Positive; HER2 ~ ERBB2 ~ Neu ! by IHC,Negative; Cytokeratin AE1/AE3 ~ AE1/AE3 ! by IHC,Negative
Storage:	Store frozen tissue sections at -80°C.
Stability:	All frozen tissue sections are stable for 1 year from date of purchase if stored at -80°C without repeated freeze/thaws.

Product images:

4x Image



20x Image